

### 36-1523: Monoclonal Antibody to Ornithine Decarboxylase-1 (ODC-1)(Clone : ODC1/485)

<b>Clonality :</b>	Monoclonal
<b>Clone Name :</b>	ODC1/485
<b>Application :</b>	WB,FACS,IF,WB,IHC
<b>Reactivity :</b>	Human, Rat
<b>Gene :</b>	ODC1
<b>Gene ID :</b>	4953
<b>Uniprot ID :</b>	P11926
<b>Format :</b>	Purified
<b>Alternative Name :</b>	ODC1
<b>Isotype :</b>	Mouse IgG1, kappa
<b>Immunogen Information :</b>	Recombinant human ODC-1 protein

#### Description

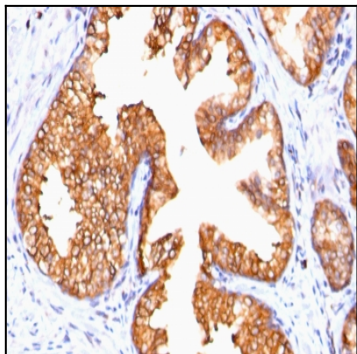
Recognizes a 53kDa protein, identified as the Ornithine Decarboxylase (ODC-1). ODC is the initial and rate-limiting enzyme in the biosynthetic pathway of polyamines and is involved in the conversion of ornithine to putrescine. The biological activity of ODC-1 is rapidly induced in response to virtually all agents known to promote cell proliferation including hormones, drugs, growth factors, mitogens, and tumor promoters. Reportedly, ODC mRNA levels are elevated in lung carcinomas as well as in colon adenomas and carcinomas. ODC activity in colorectal carcinomas is greater than those in adenomas and normal mucosa.

#### Product Info

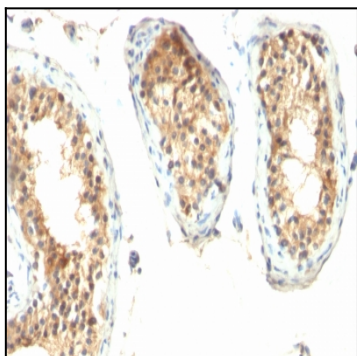
<b>Amount :</b>	100 µg
<b>Purification :</b>	Affinity Chromatography
<b>Content :</b>	100 µg in 500 µl PBS containing 0.05% BSA and 0.05% sodium azide. Sodium azide is highly toxic.
<b>Storage condition :</b>	Store the antibody at 4°C; stable for 6 months. For long-term storage; store at -20°C. Avoid repeated freeze and thaw cycles.

#### Application Note

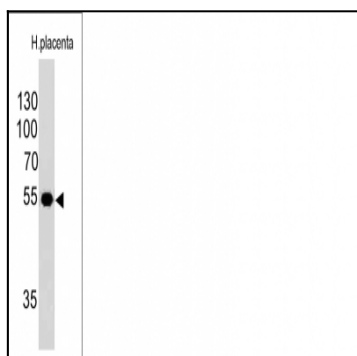
Western Blot (0.5-1ug/ml); Flow Cytometry (1-2ug/million cells); Immunofluorescence (1-2ug/ml); Western Blot (1-2ug/ml); Immunohistochemistry (Formalin-fixed) (0.25-0.5ug/ml for 30 minutes at RT)(Staining of formalin-fixed tissues requires heating tissue sections in 10mM Tris with 1mM EDTA, pH 9.0, for 45 min at 95&degC followed by cooling at RT for 20 minutes);



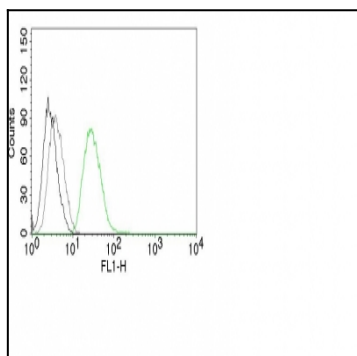
Formalin-fixed, paraffin-embedded human Prostate Carcinoma stained with ODC-1 Monoclonal Antibody (ODC1/485)



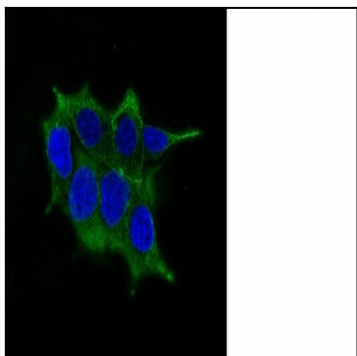
Formalin-fixed, paraffin-embedded human Testicular Carcinoma stained with ODC-1 Monoclonal Antibody (ODC1/485)



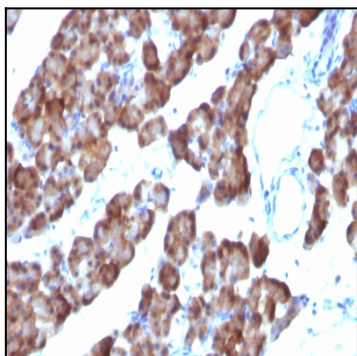
Western Blot of ODC1 in human placental Lysate using ODC-1 Monoclonal Antibody (ODC1/485).



Flow Cytometry of human ODC1 on PC3 Cells. Black: Cells alone; Grey: Isotype Control; Green: AF488-labeled ODC1 Monoclonal Antibody (ODC1/485).



IF staining of LNCap cells using AF488 labeled ODC1 Monoclonal Antibody (ODC1/485) (Green). DAPI was used to stain the cell nucleus (blue).



Formalin-fixed, paraffin-embedded Rat Pancreas stained with ODC1 Monoclonal Antibody (ODC1/485).