

36-1527: Monoclonal Antibody to PAX6 (Stem Cell Marker)(Clone : PAX6/498)

Clonality :	Monoclonal
Clone Name :	PAX6/498
Application :	FACS,IF,WB
Reactivity :	Human, Mouse, Rat
Gene :	PAX6
Gene ID :	5080
Uniprot ID :	P26367
Format :	Purified
Alternative Name :	PAX6,AN2
Isotype :	Mouse IgG1, kappa
Immunogen Information :	Recombinant fragment (N-terminus; aa 1-300) of human PAX6 protein

Description

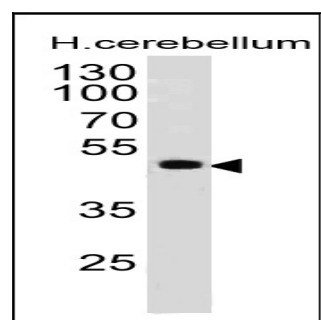
Pax genes contain paired domains with strong homology to genes in *Drosophila*, which are involved in programming early development. Lesions in the Pax-6 gene account for most cases of aniridia, a congenital malformation of the eye, chiefly characterized by iris hypoplasia, which can cause blindness. Pax-6 is involved in other anterior segment malformations besides aniridia, such as Peters anomaly, a major error in the embryonic development of the eye with corneal clouding with variable iridolenticulocorneal adhesions. The Pax-6 gene encodes a transcriptional regulator that recognizes target genes through its paired-type DNA-binding domain. The paired domain is composed of two distinct DNA-binding subdomains, the amino-terminal subdomain and the carboxy-terminal subdomain, which bind respective consensus DNA sequences. The human Pax-6 gene produces two alternatively spliced isoforms that have the distinct structure of the paired domain.

Product Info

Amount :	100 µg
Purification :	Affinity Chromatography
Content :	100 µg in 500 µl PBS containing 0.05% BSA and 0.05% sodium azide. Sodium azide is highly toxic.
Storage condition :	Store the antibody at 4°C; stable for 6 months. For long-term storage; store at -20°C. Avoid repeated freeze and thaw cycles.

Application Note

Flow Cytometry (0.5-1ug/million cells); ,Immunofluorescence (0.5-1ug/ml); ,Western Blot (1-2ug/ml);,



Western Blot of human Cerebellum Lysate using PAX6 Monoclonal Antibody (PAX6/498).