

## 10-4129-F: Monoclonal Antibody to Human CD7 (Clone: BF12 ) FITC Conjugated

<b>Clonality :</b>	Monoclonal
<b>Clone Name :</b>	BF12
<b>Application :</b>	FACS
<b>Reactivity :</b>	Human
<b>Conjugate :</b>	FITC
<b>Gene :</b>	CD7
<b>Gene ID :</b>	924
<b>Uniprot ID :</b>	P09564
<b>Format :</b>	Purified
<b>Alternative Name :</b>	T-cell antigen CD7,GP40,T-cell leukemia antigen,T-cell surface antigen Leu-9,TP41
<b>Isotype :</b>	Mouse IgG1 Kappa
<b>Immunogen Information :</b>	Chronic Lymphoïd Leukemia cells (CLL) were used as immunogen for this antibody.

### Product Info

<b>Amount :</b>	25 µg / 100 µg
<b>Purification :</b>	Protein G Chromatography
<b>Content :</b>	25 µg in 125 µl/100 µg in 500 µl Tris, 0.05% sodium azide. Sodium azide is highly toxic.
<b>Storage condition :</b>	Store the antibody at 4°C, stable for 6 months.

### Application Note

FACS: 0.5-1 µg/10<sup>6</sup> cells

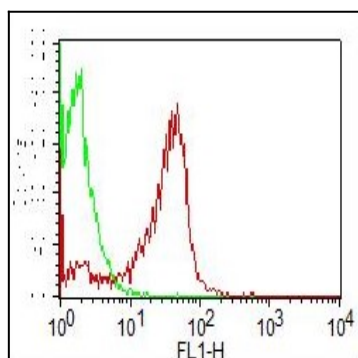


Fig-1: Cell Surface FLOW analysis of hCD7 FITC in PBMC (Lymphocyte gated) using 0.2 µg/10<sup>6</sup> cells. Green represents isotype control (ABEOMICS); red represents hCD7 FITC conjugated antibody (10-4129-F, clone:BF12).