

10-7562-P: Monoclonal Antibody to Human PD-L1 (Clone: ABM4E54) PE Conjugated

Clonality :	Monoclonal
Clone Name :	ABM4E54
Application :	FACS
Reactivity :	Human
Conjugate :	PE
Gene :	CD274
Gene ID :	29126
Uniprot ID :	Q9NZQ7
Format :	Purified
Alternative Name :	CD274,B7H1,PDCD1L1,PDCD1LG1,PDL1
Isotype :	Mouse IgG2a Kappa
Immunogen Information :	A partial length recombinant PDL1 protein (amino acids 18-227) was used as the immunogen for this antibody.

Description

PD-L1 (CD274/B7-H1) is a critical membrane-bound costimulatory molecule belonging to the B7 superfamily that inhibits immune responses through its receptor, PD-1. PD-L1 plays a key role in the pathogenesis of inflammatory diseases (programmed death 1). It is widely expressed in the mononuclear phagocyte system (MPS), may co-stimulate T cells, and regulates inflammatory responses. PD-L1 exerts inflammation regulatory functions via a negative co-stimulatory effect on T cell functions to inhibit cytokine secretion, facilitates apoptosis of activated T cells, and induces T cell anergy. Aberrant expression and dysregulation of CD274 have been reported during bacterial infection, inflammation, and in numerous autoimmune diseases.

Product Info

Amount :	100 Test
Purification :	Protein G Chromatography
Content :	25 Test in 125 µl/100 Test in 500 µl PBS containing 0.05% sodium azide. Sodium azide is highly toxic.
Storage condition :	Store the antibody at 4°C; stable for 6 months.

Application Note

FACS: 1-2 µg/ml

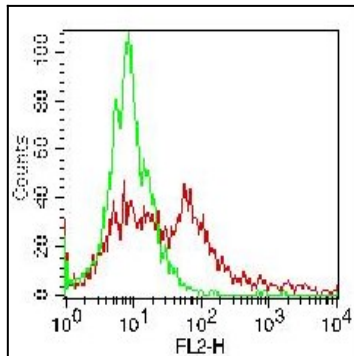


Fig-1: Cell Surface FLOW analysis of PD-L1- PE in PHA treated human PBMC using 1 μ g of PE conjugated PD-L1 antibody (Clone: ABM4E54). Green represents isotype control (ABEOMICS); red represents anti-PD-L1-PE (10-7562-PE) antibody.