

11-7040: Polyclonal antibody to JMJD6

Clonality :	Polyclonal
Application :	WB
Reactivity :	Mouse,Human
Gene :	JMJD6
Gene ID :	23210
Uniprot ID :	Q6NYC1
Format :	Purified
Alternative Name :	Histone arginine demethylase JMJD6, JmjC domain-containing protein 6, Jumonji domain-containing protein 6, Lysyl-hydroxylase JMJD6, Peptide-lysine 5-dioxygenase JMJD6, Phosphatidylserine receptor
Isotype :	Rabbit IgG
Immunogen Information :	A partial length recombinant JMJD6 protein (amino acids 110-330) was used as the immunogen for this antibody.

Product Info

Amount :	25 µg / 100 µg
Purification :	Protein A Chromatography
Content :	25 µg in 50 µl/100 µg in 200 µl PBS containing 0.05% BSA and 0.05% sodium azide. Sodium azide is highly toxic.
Storage condition :	Store the antibody at 4°C, stable for 6 months. For long-term storage, store at -20°C. Avoid repeated freeze and thaw cycles.

Application Note

Western blot analysis: 1-2 µg/ml

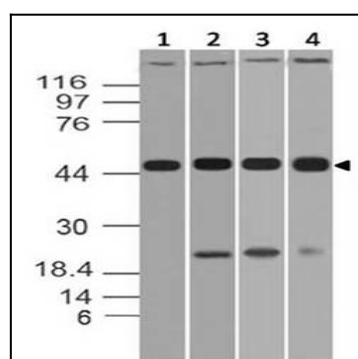


Figure-1: Western blot analysis of JMJD6. Anti-JMJD6 antibody (11-7040) was used at 1 µg/ml on (1) HT-29, (2) 3T3, (3) RAW and (4) EL-4 lysates.