

## 11-7588: Polyclonal Antibody to Olfactomedin-4

|                                |  |
|--------------------------------|--|
| <b>Clonality :</b>             | Polyclonal   |
| <b>Application :</b>           | WB   |
| <b>Reactivity :</b>            | Human  |
| <b>Gene :</b>                  | OLFM4  |
| <b>Gene ID :</b>               | 10562  |
| <b>Uniprot ID :</b>            | Q6UX06   |
| <b>Format :</b>                | Purified   |
| <b>Alternative Name :</b>      | Antiapoptotic protein GW112, G-CSF-stimulated clone 1 protein, hOLfD, GW112  |
| <b>Isotype :</b>               | Rabbit IgG   |
| <b>Immunogen Information :</b> | A partial length recombinant Olfactomedin-4 protein (amino acids 300-510) was used as the immunogen for this antibody. |

### Product Info

|                            |   |
|----------------------------|---|
| <b>Amount :</b>            | 25 µg / 100 µg  |
| <b>Purification :</b>      | Protein A Chromatography  |
| <b>Content :</b>           | 25 µg in 50 µl/100 µg in 200 µl PBS containing 0.05% BSA and 0.05% sodium azide. Sodium azide is highly toxic.                |
| <b>Storage condition :</b> | Store the antibody at 4°C, stable for 6 months. For long-term storage, store at -20°C. Avoid repeated freeze and thaw cycles. |

### Application Note

Western blot analysis: 2-4 µg/ml

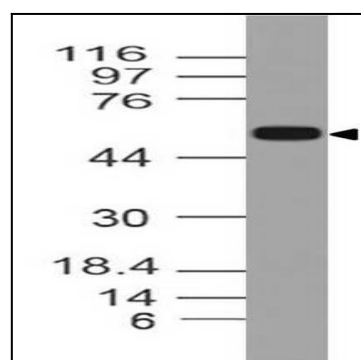


Figure-1: Western blot analysis of Olfactomedin-4. Anti-Olfactomedin-4 antibody (11-7588) was used at 2 µg/ml on h Stomach lysate.