

11-8115: Polyclonal antibody to Latexin

Clonality :	Polyclonal
Application :	WB
Reactivity :	Mouse,Human
Gene :	LXN
Gene ID :	56925
Uniprot ID :	Q9BS40
Format :	Purified
Alternative Name :	Endogenous carboxypeptidase inhibitor, Protein MUM, Tissue carboxypeptidase inhibitor
Isotype :	Rabbit IgG
Immunogen Information :	Full length recombinant Latexin protein was used as the immunogen for this antibody.

Product Info

Amount :	25µg / 100 µg
Purification :	Protein A Chromatography
Content :	25 µg in 50 µl/100 µg in 200 µl PBS containing 0.05% BSA and 0.05% sodium azide. Sodium azide is highly toxic.
Storage condition :	Store the antibody at 4°C, stable for 6 months. For long-term storage, store at -20°C. Avoid repeated freeze and thaw cycles.

Application Note

Western blot analysis: 2-4 µg/ml

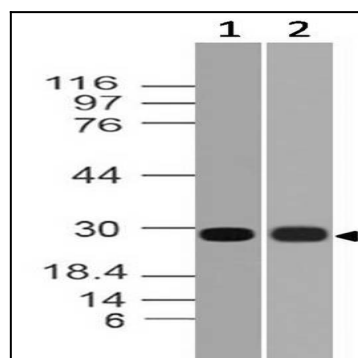


Figure-1: Western blot analysis of Latexin. Anti-Latexin antibody (11-8115) was used at 2 µg/ml on (1) PANC-1 and (2) 3T3 lysates.