

## 10-4054: Monoclonal Antibody to CLEC1 (Clone: ABM2H82)

<b>Clonality :</b>	Monoclonal
<b>Clone Name :</b>	ABM2H82
<b>Application :</b>	FACS
<b>Reactivity :</b>	Human
<b>Gene :</b>	CLEC1A
<b>Gene ID :</b>	51267
<b>Uniprot ID :</b>	Q8NC01
<b>Format :</b>	Purified
<b>Alternative Name :</b>	C-type lectin-like receptor 1, CLEC1A
<b>Isotype :</b>	Mouse IgG2b Kappa
<b>Immunogen Information :</b>	A partial length recombinant CLEC1 protein (amino acids 55-280) was used as the immunogen for this antibody.

### Description

CLEC1A (C-type lectin domain family 1, member A) is a 31 kDa protein belonging to the C-type lectin/C-type lectin-like domain (CTL/CTLD) superfamily. CLEC1A functions as a transmembrane signaling receptor, and selectively and non-covalently interacts with carbohydrates. Members of this family have common protein fold and have diverse functions, such as cell adhesion, cell-cell signaling, glycoprotein turnover and have a role in inflammation and immune response. CLEC1A plays important role in regulating dendritic cell function. CLEC1A is expressed preferentially in dendritic cells.

### Product Info

<b>Amount :</b>	25 µg / 100 µg
<b>Purification :</b>	Protein G Chromatography
<b>Content :</b>	25 µg in 50 µl/100 µg in 200 µl PBS containing 0.05% BSA and 0.05% sodium azide. Sodium azide is highly toxic.
<b>Storage condition :</b>	Store the antibody at 4°C, stable for 6 months. For long-term storage, store at -20°C. Avoid repeated freeze and thaw cycles.

### Application Note

FlowCytometry: 0.5-1 µg/10<sup>6</sup> Cells

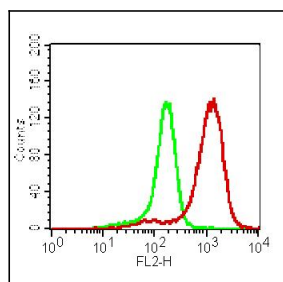


Figure-1: Cell surface flowcytometry analysis of CLEC1 on human PBMC (Monocytes) using 0.5 µg/10<sup>6</sup> Cells of Anti-CLEC1 antibody (Clone: ABM2H82). Green represent isotype control and red represent Anti human CLEC1 antibody (Abeomics 10-4054). Goat anti mouse PE conjugated was used as the secondary antibody.