

## 45-1004: Rabbit Polyclonal Antibody to DYKDDDDK-tag

<b>Clonality :</b>	Polyclonal
<b>Application :</b>	ELISA
<b>Format :</b>	Purified
<b>Isotype :</b>	Rabbit IgG
<b>Immunogen Information :</b>	A synthetic peptide DYKDDDDK conjugated to KLH

### Description

The DYKDDDDK peptide is a small component of the epitope which does not appear to interfere with the bioactivity or the biodistribution of the recombinant protein. It has been used extensively as a general epitope tag in expression vectors. DYKDDDDK-tag Antibody, pAb, Rabbit can be used to detect DYKDDDDK-tagged proteins.

### Product Info

<b>Amount :</b>	40 µg
<b>Purification :</b>	Immunoaffinity chromatography
<b>Content :</b>	0.5 mg/ml, lyophilized with PBS, pH 7.4, containing 0.02% sodium azide
<b>Storage condition :</b>	The antibody is stable in lyophilized form if stored at -20°C or below. The reconstituted antibody can be stored for 2-3 weeks at 2-8°C. For long term storage, aliquot and store at -20°C or below. Avoid repeated freezing and thawing cycles.

### Application Note

**ELISA:** 0.01-0.05 µg/ml

**Western blot:** 1-2 µg/ml

**Immunofluorescence:** 10-20 µg/ml

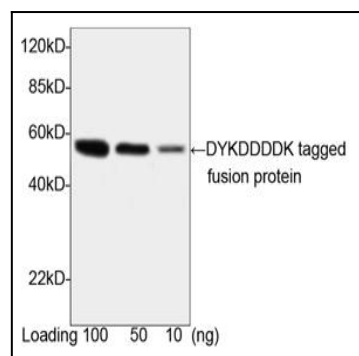


Figure-1 : Western blot analysis of DYKDDDDK-tag Antibody at 1 µg/ml on DYKDDDDK-tagged fusion protein (100, 50 & 10 ng).

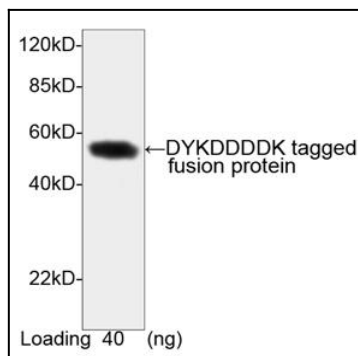


Figure-2 : Western blot analysis of DYKDDDDK-tag Antibody at 1  $\mu$ g/ml on DYKDDDDK-tagged fusion protein (40ng).

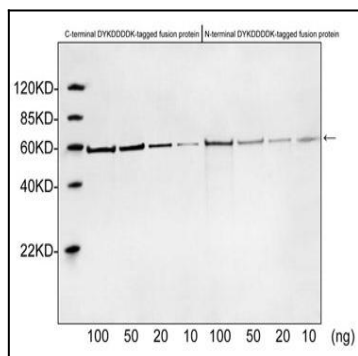


Figure-3 : Western blot analysis of DYKDDDDK-tag Antibody at 1  $\mu$ g/ml on C-terminal & N-terminal of DYKDDDDK tagged fusion proteins (10-100ng) expressed in E. coli cell lysate.

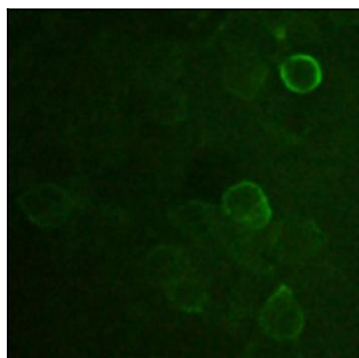


Figure-4 : Immunofluorescence analysis of DYKDDDDK-tag Antibody at 10  $\hat{1}$ /<sub>4</sub>g/ml on HEK293 cells transfected with Flag-tagged CD4 protein.