

## 45-1009: Mouse Monoclonal Antibody to MBP-tag (Clone : 5B10B11) (Discontinued)

<b>Clonality :</b>	Monoclonal
<b>Clone Name :</b>	5B10B11
<b>Application :</b>	ELISA
<b>Format :</b>	Purified
<b>Isotype :</b>	Mouse IgG1
<b>Immunogen Information :</b>	Purified recombinant MBP fusion protein

### Description

Maltose binding protein (MBP) is a useful affinity tag that can increase the expression level and solubility of the MBP tagged protein. It promotes proper folding of the fusion protein, and it can be also used to prevent an insoluble form (inclusion bodies). MBP tagged protein is purified with an amylose column. The MBP tagged protein can be eluted from the column with maltose and cleaved with a specific protease to yield the purified target protein. MBP-tag Antibody, mAb, Mouse is suitable for detecting fusion proteins that contain a MBP-tag. MBP-tag Antibody, mAb, Mouse is produced from the hybridoma resulting from fusion of Sp2/0 myeloma and lymphocytes obtained from mouse immunized with purified recombinant MBP fusion protein.

### Product Info

<b>Amount :</b>	40 µg
<b>Purification :</b>	Protein A chromatography
<b>Content :</b>	0.5 mg/ml, lyophilized with PBS, pH 7.4, containing 0.02% sodium azide
<b>Storage condition :</b>	The antibody is stable in lyophilized form if stored at -20°C or below. The reconstituted antibody can be stored for 2-3 weeks at 2-8°C. For long term storage, aliquot and store at -20°C or below. Avoid repeated freezing and thawing cycles.

### Application Note

**ELISA:** 0.1-1.0 µg/ml

**Western blot:** 1-2 µg/ml

Reconstitute the lyophilized powder with deionized water (or equivalent) to an antibody concentration of 0.5 mg/ml.

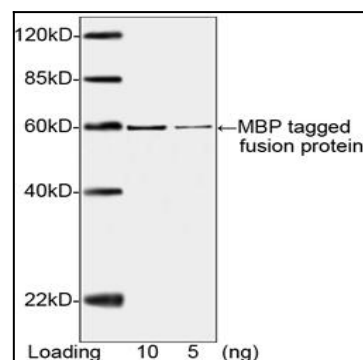


Figure-1 : Western blot analysis of MBP-tag Antibody (Clone: 5B10B11) at 1 µg/ml on MBP-tagged fusion protein (10 & 5 ng). IRDye 800 Conjugated Goat Anti-Mouse IgG was used as secondary Antibody.