

45-1012: Rabbit Polyclonal Antibody to T7-tag (Discontinued)

Clonality :	Polyclonal
Application :	ELISA
Format :	Purified
Isotype :	Rabbit IgG
Immunogen Information :	T7-tag epitope peptide conjugated to KLH

Description

Well-characterized antibodies with useful epitope tags have been widely used in the study of protein expression in various systems. The T7 tag (MASMTGGQMG) is a peptide with 11 amino acids encoded in the leader sequence of T7 bacteriophage gene10. This gene encodes a T7 major capsid protein. The T7 tag serves as a tag in many expression vectors including the pET system that is based on the efficient T7 RNA polymerase expression system. Rabbit Anti-T7-tag Polyclonal Antibody is developed in rabbit using a synthetic T7-tag epitope peptide conjugated to KLH.

Product Info

Amount :	40 µg
Purification :	Immunoaffinity chromatography
Content :	0.5 mg/ml, lyophilized with PBS, pH 7.4, containing 0.02% sodium azide
Storage condition :	The antibody is stable in lyophilized form if stored at -20°C or below. The reconstituted antibody can be stored for 2-3 weeks at 2-8°C. For long term storage, aliquot and store at -20°C or below. Avoid repeated freezing and thawing cycles.

Application Note

ELISA: 0.05-0.2 µg/ml

Western blot: 2-4 µg/ml

Reconstitute the lyophilized powder with deionized water (or equivalent) to an antibody concentration of 0.5 mg/ml.

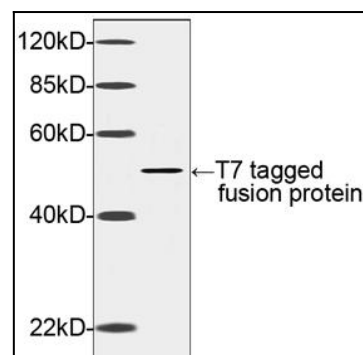


Figure-1 : Western blot analysis of T7-tag Antibody at 2 µg/ml on T7-tagged fusion protein.