

45-1013: Rabbit Polyclonal Antibody to HSV-tag(Discontinued)

Clonality :	Polyclonal
Application :	ELISA, WB
Format :	Purified
Isotype :	Rabbit IgG
Immunogen Information :	HSV epitope tag peptide QPELAPEDPED conjugated to KLH

Product Info

Amount :	40 µg
Purification :	Immunoaffinity chromatography
Content :	0.5 mg/ml, lyophilized with PBS, pH 7.4, containing 0.02% sodium azide
Storage condition :	The antibody is stable in lyophilized form if stored at -20°C or below. The reconstituted antibody can be stored for 2-3 weeks at 2-8°C. For long term storage, aliquot and store at -20°C or below. Avoid repeated freezing and thawing cycles.

Application Note

ELISA: 0.05-0.2 µg/ml

Western blot: 1-2 µg/ml

Reconstitute the lyophilized powder with deionized water (or equivalent) to an antibody concentration of 0.5 mg/ml.

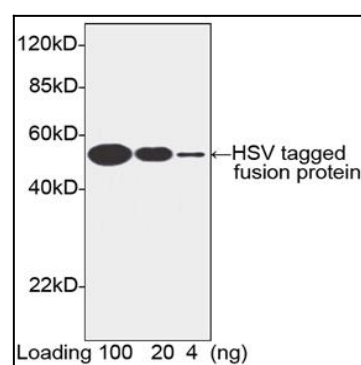


Figure-1 : Western blot analysis of HSV-tag Antibody at 1 µg/ml on HSV-tagged fusion protein (100, 20 and 4 ng).

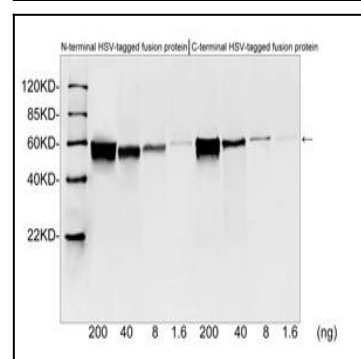


Figure-2 : Western blot analysis of HSV-tag Antibody at 1 µg/ml on N-terminal (Left) & C-terminal (Right) of HSV tagged fusion proteins (200, 40, 8 & 1.6 ng) expressed in E. coli cell lysate . IRDye 800 Conjugated Goat Anti-Rabbit IgG was used as Secondary Antibody.