

45-1014: Rabbit Polyclonal Antibody to E2-tag(Discontinued)

Clonality :	Polyclonal
Application :	ELISA
Format :	Purified
Isotype :	Rabbit IgG
Immunogen Information :	E2 epitope tag peptide GVSSTSSDFRDR conjugated to KLH

Product Info

Amount :	40 µg / 100 µg
Purification :	Immunoaffinity chromatography
Content :	1 mg/ml in PBS, pH 7.4, containing 0.02% sodium azide.
Storage condition :	The antibody is stable for 2-3 weeks if stored at 2-8°C. For long term storage, aliquot and store at -20°C or below. Avoid repeated freezing and thawing cycles.

Application Note

ELISA: 0.05-0.2 µg/ml

Western blot: 1-2 µg/ml.

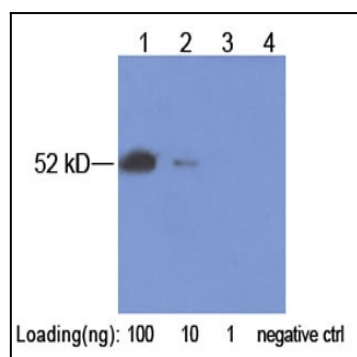


Figure-1 : Western blot analysis of E2-tag antibody at 1 µg/ml on E2-tagged fusion protein transfected in CHO cell lysate (Lane 1-3), 4: CHO cell lysate as Negative Control.

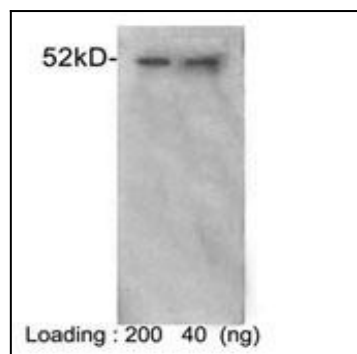


Figure-2 : Western blot analysis of E2-tag Antibody at 1 µg/ml on E2 tagged fusion protein (200 & 40 ng) expressed in E. coli cell lysate.

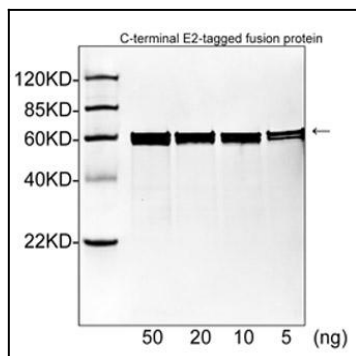


Figure-3 : Western blot analysis of E2-tag Antibody at 1 µg/ml on E2-tagged fusion protein (50, 20, 10 & 5 ng) expressed in E. coli cell lysate. IRDye 800 Conjugated Goat Anti-Rabbit IgG was used as secondary Antibody.