

45-1018: Rabbit Polyclonal Antibody to Avi-tag

Clonality :	Polyclonal
Application :	ELISA, WB
Format :	Purified
Isotype :	Rabbit IgG
Immunogen Information :	Avi tag peptide conjugated to KLH

Description

Well-characterized antibodies for epitope tags have been widely used in the study of protein expression in various systems. The Avi tag is a biotin-acceptor peptide¹, GLNDIFEAQKIEWHE. The 15-residue peptide served as a substrate mimic for biotin ligase (BirA), which usually recognizes the much larger protein domain. Rabbit Anti-Avi-tag Polyclonal Antibody is developed in rabbit using a synthetic Avi tag peptide conjugated to KLH.

Product Info

Amount :	40 µg
Purification :	Immunoaffinity chromatography
Content :	0.5 mg/ml, lyophilized with PBS, pH 7.4, containing 0.02% sodium azide
Storage condition :	The antibody is stable in lyophilized form if stored at -20°C or below. The reconstituted antibody can be stored for 2-3 weeks at 2-8°C. For long term storage, aliquot and store at -20°C or below. Avoid repeated freezing and thawing cycles.

Application Note

ELISA: 0.05-0.2 µg/ml

Western blot: 1-2 µg/ml

Reconstitute the lyophilized powder with deionized water (or equivalent) to an antibody concentration of 0.5 mg/ml.

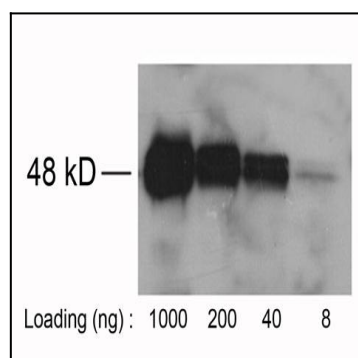


Figure-1 : Western blot analysis of Avi-tag Antibody at 1 µg/ml on Avi-tagged fusion protein (1000, 200, 40 & 8 ng) expressed in E. coli cell lysate.

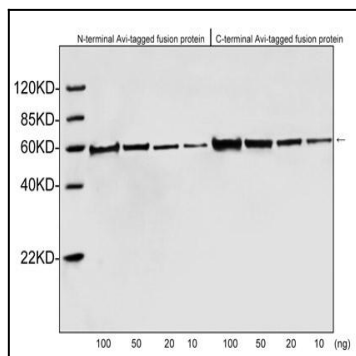


Figure-2 : Western blot analysis of Avi-tag Antibody at 1 µg/ml on N-terminal & C-terminal of Avi tagged fusion protein (100, 50, 20 & 10 ng) expressed in E. coli cell lysate, IRDye 800 Conjugated Goat Anti-Rabbit IgG was used as secondary antibody.