

45-1020: Rabbit Polyclonal Antibody to Tag-100-tag(Discontinued)

Clonality :	Polyclonal
Application :	ELISA
Format :	Purified
Isotype :	Rabbit IgG
Immunogen Information :	Tag-100-tag peptide EETARFQPGYRS conjugated to KLH

Description

Well-characterized antibodies against short-sequence epitope tags are common in the study of protein expression in several different expression systems. Tag-100 tag is an epitope tag composed of a 12-residue peptide, EETARFQPGYRS, derived from the C-termini of mammalian MAPK/ERK kinases.

Product Info

Amount :	40 µg
Purification :	Immunoaffinity chromatography
Content :	1 mg/ml in PBS, pH7.4, containing 0.02% sodium azide
Storage condition :	The antibody is stable for 2-3 weeks if stored at 2-8°C. For long term storage, aliquot and store at -20°C or below. Avoid repeated freezing and thawing cycles.

Application Note

ELISA: 0.05-0.2 µg/ml

Western blot: 1-2 µg/ml

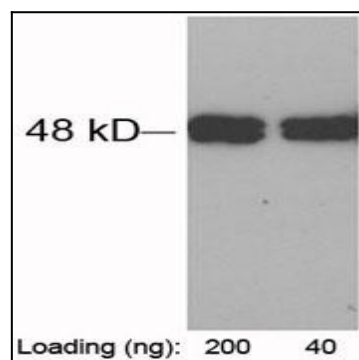


Figure-1 : Western blot analysis of tag-100-tag Antibody at 1 µg/ml on tag-100-tagged fusion protein (200 & 40 ng) expressed in E. coli cell lysate.

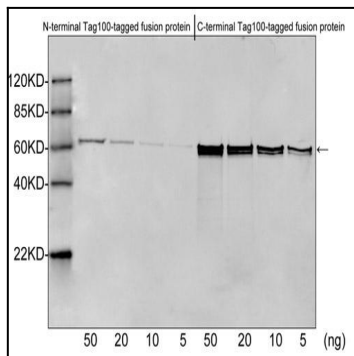


Figure-2 : Western blot analysis of Tag-100-tag Antibody at 1 µg/ml on N terminal & C- terminal of Tag-100-tagged fusion protein (50, 20, 10 & 5 ng) expressed in E. coli cell lysate, IRDye 800 Conjugated Goat Anti-Rabbit IgG was used as secondary antibody.