

45-1021: Rabbit Polyclonal Antibody to S1-tag

Clonality :	Polyclonal
Application :	ELISA, WB
Format :	Purified
Isotype :	Rabbit IgG
Immunogen Information :	S1 epitope tag peptide NANNPDWDF conjugated to KLH

Description

S1 tag is an epitope tag composed of a nine-residue peptide, NANNPDWDF, derived from the hepatitis B virus preS1 region. Epitope tags consisting of short sequences recognized by well-characterized antibodies have been widely used in the study of protein expression in various systems. The Rabbit Anti-S1-tag polyclonal antibody is highly purified from rabbit antiserum by immunoaffinity chromatography.

Product Info

Amount :	40 µg
Purification :	Immunoaffinity chromatography
Content :	1 mg/ml in PBS, pH7.4, containing 0.02% sodium azide
Storage condition :	The antibody is stable for 2-3 weeks if stored at 2-8°C. For long term storage, aliquot and store at -20°C or below. Avoid repeated freezing and thawing cycles.

Application Note

ELISA: 0.05-0.2 µg/ml

Western blot: 2-4 µg/ml

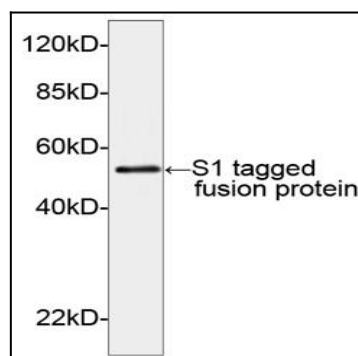


Figure-1 : Western blot analysis of S1-tag Antibody at 2 µg/ml on S1-tagged fusion protein.

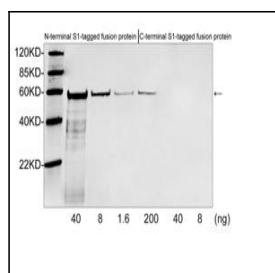


Figure-2 : Western blot analysis of S1-tag Antibody at 1 µg/ml on N-terminal (Left: 40, 8 & 1.6 ng) & C-terminal (Right: 200, 40 & 8 ng) of S1 tagged fusion protein expressed in E. coli cell lysate, IRDye800 Conjugated Goat Anti-Rabbit IgG was used as secondary antibody.