

45-1026: Rabbit Polyclonal Antibody to IDO(Discontinued)

Clonality :	Polyclonal
Application :	WB
Reactivity :	Mouse
Gene :	IDO1
Gene ID :	3620
Uniprot ID :	P14902
Format :	Purified
Alternative Name :	Indoleamine 2,3-dioxygenase 1, Indoleamine-pyrrole 2,3-dioxygenase
Isotype :	Rabbit IgG
Immunogen Information :	Synthetic peptide KPSKKKPTDGDKE conjugated to KLH

Description

Indoleamine 2,3-dioxygenase (IDO) catalyzes the degradation of the essential amino acid L-tryptophan to N-formylkynurenine. IDO has been implicated in protection against intracellular and extracellular pathogens. Rabbit Anti-IDO Polyclonal Antibody is developed in rabbit hosts using a synthetic peptide conjugated to KLH. Rabbit Anti-IDO Polyclonal Antibody is highly purified from rabbit antiserum by Protein A.

Product Info

Amount :	40 µg
Purification :	Protein A chromatography
Content :	0.5 mg/ml in PBS, pH 7.4, containing 30% glycerol and 0.02% sodium azide
Storage condition :	The antibody is stable for 2-3 weeks if stored at 2-8°C. For long term storage, aliquot and store at -20°C or below. Avoid repeated freezing and thawing cycles.

Application Note

Western blot: 1-2 µg/ml

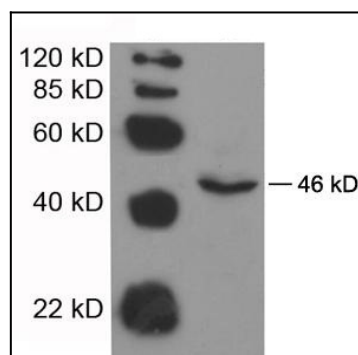


Figure-1 : Western blot analysis of IDO Antibody at 1 µg/ml on Mouse heart tissue lysate (50 µg).