

45-1039: Rabbit Polyclonal Antibody to HSP70(Discontinued)

Clonality :	Polyclonal
Application :	ELISA
Reactivity :	Mouse,Human
Gene :	HSPA1A
Gene ID :	3303
Uniprot ID :	P0DMV8
Format :	Purified
Alternative Name :	Heat shock 70 kDa protein 1A, Heat shock 70 kDa protein 1, HSP70-1, HSP70.1
Isotype :	Rabbit IgG
Immunogen Information :	Synthetic peptide within the N-terminal of human HSP70 protein

Description

HSP70 is a member of the chaperonin family. It stabilizes existing proteins against aggregation and mediates the folding of newly translated polypeptides in both cytosol and organelles. HSP70 participates in all of these processes through its ability to recognize nonnative conformations of other proteins. It binds extended peptide segments with a net hydrophobic character exposed during translation and membrane translocation or following stress-induced damage. Rabbit Anti-HSP70 Polyclonal Antibody is developed in rabbit hosts using a KLH-coupled synthetic peptide within N-terminal of human HSP70 protein.

Product Info

Amount :	40 µg
Purification :	Immunoaffinity chromatography
Content :	0.5 mg/ml, lyophilized with PBS, pH 7.4, containing 0.02% sodium azide
Storage condition :	The antibody is stable in lyophilized form if stored at -20°C or below. The reconstituted antibody can be stored for 2-3 weeks at 2-8°C. For long term storage, aliquot and store at -20°C or below. Avoid repeated freezing and thawing cycles.

Application Note

ELISA: 0.05-0.2 µg/ml
Western blot: 1-2 µg/ml
Immunohistochemistry: 10-15µg/ml
Flowcytometry :1-2 µg/10⁶ Cells

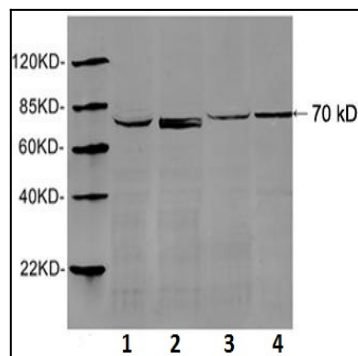


Figure-1 : Western blot analysis of HSP70 Antibody at 1 µg/ml on Hela, HEK29, NIH/3T3 cell lysate and Mouse brain tissue lysate.

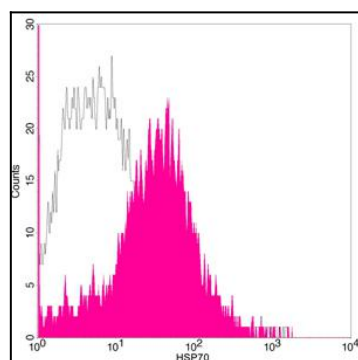


Figure-2 : Flow cytometric analysis of HSP70 Antibody on HEK-293 cells, Shaded histogram represents HSP70 Antibody and open histogram represents isotype control, PE conjugated anti-rabbit IgG used as secondary antibody.

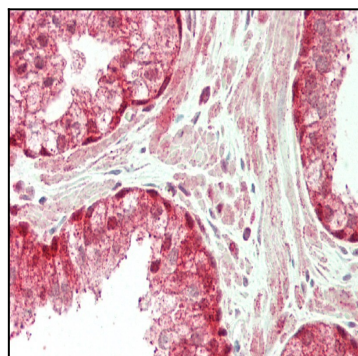


Figure-3 : Immunohistochemical analysis of HSP70 Antibody at 10 µg/ml on human Prostate tissue slide (Paraffin embedded).

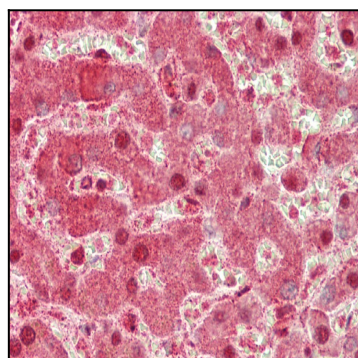


Figure-4 : Immunohistochemical analysis of HSP70 Antibody at 10 µg/ml on human Liver tissue slide (Paraffin embedded).