

45-1044: Rabbit Polyclonal Antibody to Lamin A+C(Discontinued)

Clonality :	Polyclonal
Application :	ELISA
Reactivity :	Mouse,Human
Gene :	LMNA
Gene ID :	4000
Uniprot ID :	P02545
Format :	Purified
Alternative Name :	Lamin A/C antibody, Renal carcinoma antigen NY-REN-32
Isotype :	Rabbit IgG
Immunogen Information :	KLH-coupled synthetic peptide within residues 400-450 of human Lamin A .

Description

Lamins are structural protein components of the nuclear lamina which contains 3 members: Lamin A, B and C in mammalian cells. Lamin A and lamin C are generated by alternative splicing from the same gene and share complete identity for the first 566 amino acids. Lamin A interacts with transcription factor SREBP1 via its C-terminal domain. The lamin A/C deficiency is probably associated with both defective nuclear mechanics and impaired transcriptional activation. The lamin A/C is cleaved by caspase-6 and serves as a marker for caspase-6 activation. Rabbit Anti-Lamin A+C Polyclonal Antibody is developed in rabbit using a KLH-coupled synthetic peptide within residues 400-450 of human Lamin A (Swiss Prot: P02545).

Product Info

Amount :	100 µg
Purification :	Immunoaffinity chromatography
Content :	0.5 mg/ml, lyophilized with PBS, pH 7.4, containing 0.02% sodium azide
Storage condition :	The antibody is stable in lyophilized form if stored at -20°C or below. The reconstituted antibody can be stored for 2-3 weeks at 2-8°C. For long term storage, aliquot and store at -20°C or below. Avoid repeated freezing and thawing cycles.

Application Note

ELISA Capture: 0.5-10 µg/ml
ELISA Detection: 0.05-0.2 µg/ml
Western Blot: 1-2 µg/ml
Flowcytometry analysis: 1-2 µg/10⁶Cells

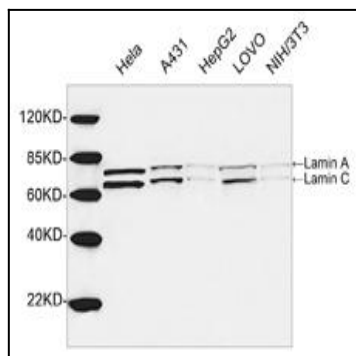


Figure-1 : Western blot analysis of Lamin A+C Antibody at 1 µg/ml on HeLa, A431, HepG2, LOVO, NIH/3T3 cell lysates, IRDye 800 Conjugated Goat Anti-Rabbit IgG was used as secondary antibody.

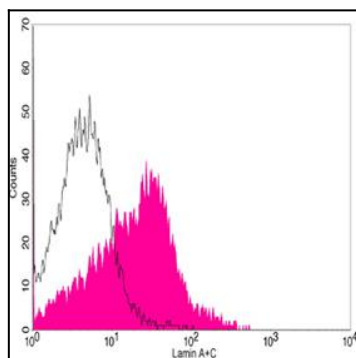


Figure-2 : Flow cytometric analysis of Lamin A+C Antibody on HepG2 cells, Shaded histogram represents Lamin A+C Antibody and open histogram represents isotype control. PE conjugated anti-rabbit IgG used as secondary antibody.