

45-1049: Rabbit Polyclonal Antibody to H1N1 NS1(Discontinued)

Clonality :	Polyclonal
Application :	WB
Format :	Purified
Isotype :	Rabbit IgG
Immunogen Information :	KLH-coupled synthetic peptide from C-terminal of Influenza A 2009 virus NS1 .

Description

Influenza A (H1N1) virus, a subtype of influenza virus A, is the most common cause of influenza (flu) in humans. A strain of swine-origin H1N1 was responsible for the 2009 flu pandemic. H1N1 (Non-structural protein 1) is a RNA-binding protein that is required for virus replication. It has three different RNA-binding activities. NS1 is a symmetrical dimeric protein consisting of six helical folds. H1N1 NS1 Antibody is developed in rabbit using KLH-coupled synthetic peptide from C-terminal of Influenza A (H1N1) 2009 virus NS1.

Product Info

Amount :	40 µg
Purification :	Immunoaffinity chromatography.
Content :	0.5 mg/ml, lyophilized with PBS, pH 7.4, containing 0.02% sodium azide.
Storage condition :	The antibody is stable in lyophilized form if stored at -20°C or below. The reconstituted antibody can be stored for 2-3 weeks at 2-8°C. For long term storage, aliquot and store at -20°C or below. Avoid repeated freezing and thawing cycles.

Application Note

Western blot: 1-2 µg/ml.

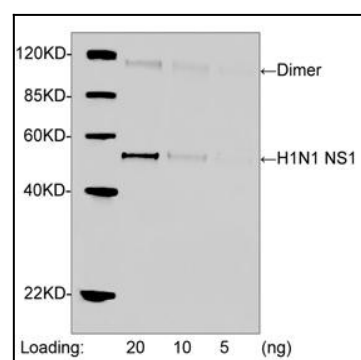


Figure-1 : Western blot analysis of H1N1 NS1 Antibody at 1 µg/ml on H1N1 NS1 recombinant protein (20, 10 & 5 ng), IRDye 800 Conjugated Goat Anti-Rabbit IgG was used as secondary antibody.