

## 45-1069: Mouse Monoclonal Antibody to CBP Tag (Clone : 1D11E5)

|                                |                                   |
|--------------------------------|-----------------------------------|
| <b>Clonality :</b>             | Monoclonal                        |
| <b>Clone Name :</b>            | 1D11E5                            |
| <b>Application :</b>           | ELISA                             |
| <b>Format :</b>                | Purified                          |
| <b>Isotype :</b>               | Mouse IgG2b,Kappa                 |
| <b>Immunogen Information :</b> | CBP tag peptide conjugated to KLH |

### Description

CBP affinity tag is a useful tag in protein study which can be added to the N or C terminus of proteins of interest through DNA recombinant technology. The tag is derived from muscle myosin light-chain kinase. The tag comprises 26 amino acid residues with the molecular weight of 4 kDa and sequence of KRRWKKNFIAVSAANRFKKISSSGAL. CBP tag has the relatively high affinity for calmodulin (CaM). CBP-tagged proteins can be purified from crude cell extracts through CaM affinity resin. CBP Tag antibody is a useful tool in analysis of CBP-tagged proteins. CBP Tag Antibody, mAb, Mouse is produced from the hybridoma resulting from fusion of SP2/0-Ag14 myeloma and B-lymphocytes harvested from mouse immunized with CBP tag peptide conjugated to KLH.

### Product Info

|                            |  |
|----------------------------|--|
| <b>Amount :</b>            | 40 µg  |
| <b>Purification :</b>      | Protein A chromatography   |
| <b>Content :</b>           | 0.5 mg/ml, lyophilized with PBS, pH 7.4, containing 0.02% sodium azide.  |
| <b>Storage condition :</b> | The antibody is stable in lyophilized form if stored at -20°C or below. The reconstituted antibody can be stored for 2-3 weeks at 2-8°C. For long term storage, aliquot and store at -20°C or below. Avoid repeated freezing and thawing cycles. |

### Application Note

**Western blot:** 1-2 µg/ml.  
**Immunoprecipitation:** 1-2 µg/ml.  
**ELISA:** 0.001-0.002 µg/ml.

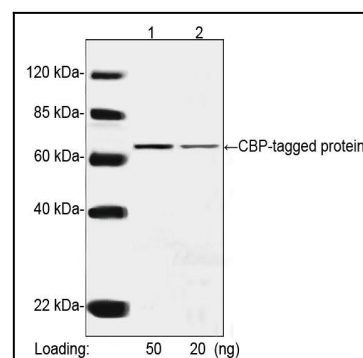


Figure-1 : Western blot analysis of CBP Tag Antibody (Clone: 1D11E5) at 1 µg/ml on CBP-tagged protein (50 & 20ng). IRDye 800 Conjugated affinity Purified Goat Anti-Mouse IgG was used as secondary Antibody.

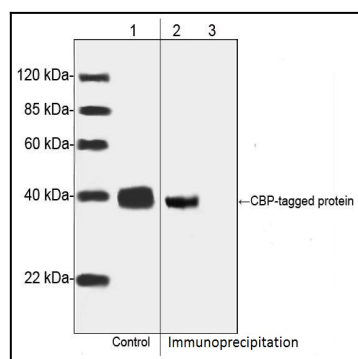


Figure-2 : Western blot analysis of CBP Tag Antibody (Clone: 1D11E5) on 1: CBP-tagged protein from the transfected CHO cell lysates as input control, 2: Immunoprecipitates of CBP-tagged protein from the transfected CHO cell lysates, 3: Immunoprecipitates of the CBP-tagged protein from the transfected CHO cell lysates with Mouse IgG Control.