

45-1088: Biotinylated Rabbit Monoclonal Antibody to Pembrolizumab (Clone : 90G12F8)

Clonality :	Monoclonal
Clone Name :	90G12F8
Application :	ELISA
Conjugate :	Biotin
Format :	Purified
Isotype :	Rabbit IgG
Immunogen Information :	Pembrolizumab

Description

Pembrolizumab (Keytruda) is a humanized monoclonal antibody that is approved by the U.S. Food and Drug Administration for the treatment of patients with unresectable or metastatic melanoma. Pembrolizumab binds to the human cell surface receptor PD-1 (Programmed Cell Death Protein 1) and blocks its interaction with PD-L1, resulting in the activation of T-cell-mediated immune responses against tumor cells. Anti-Pembrolizumab Antibody (90G12F8)[BIOTIN], mAb, Rabbit is produced from a hybridoma resulting from the fusion of partner and B-lymphocytes obtained from a rabbit immunized with Pembrolizumab.

Product Info

Amount :	40 µg
Purification :	Protein A chromatography
Content :	0.5 mg/ml, lyophilized with PBS, pH 7.4, containing 0.02% sodium azide.
Storage condition :	The antibody is stable in lyophilized form if stored at -20°C or below. The reconstituted antibody can be stored for 2-3 weeks at 2-8°C. For long term storage, aliquot and store at -20°C or below. Avoid repeated freezing and thawing cycles.

Application Note

ELISA detection: 0.01-0.1 µg/ml
ELISA blocking: 10-50 µg/ml

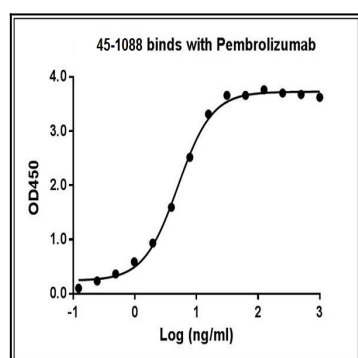


Figure-1 : ELISA binding of Pembrolizumab antibody (Clone: 90G12F8) binds with Pembrolizumab, Coating antigen: Pembrolizumab at 1 µg/ml Anti-Pembrolizumab antibody dilution start from 1,000 ng/ml, EC50= 5.01 ng/ml.

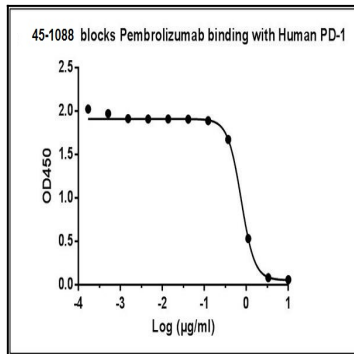


Figure-2 : ELISA blocking of Pembrolizumab antibody (Clone: 90G12F8) on Pembrolizumab and binding with Human PD-1 recombinant protein. Coating antigen: Pembrolizumab, 1 µg/ml. PD 1-Fc-biotin final concentration: 20 ng/ml. Anti-Pembrolizumab antibody dilution start from 10 µg/ml. IC₅₀ = 0.38 µg/ml.