

45-1109: Mouse Monoclonal Antibody to Human PRTN3 (Clone : 11F1A5)(Discontinued)

Clonality :	Monoclonal
Clone Name :	11F1A5
Application :	ELISA
Gene :	PRTN3
Gene ID :	5657
Uniprot ID :	P24158
Format :	Purified
Alternative Name :	ACPA, AGP7, azurophil granule protein 7, C-ANCA, C-ANCA antigen, CANCA, Leukocyte proteinase 3, MBN, MBT, Myeloblastin, Neutrophil proteinase 4, NP-4, NP4, P29, PR-3, PR3, serine proteinase, neutrophil, Wegener autoantigen, Wegener granulomatosis autoantigen
Isotype :	Mouse IgG2b,Kappa
Immunogen Information :	Recombinant Human PRTN3

Description

PRTN3 (Proteinase 3) is a protein coding gene that belongs to the peptidase S1 family, Elastase subfamily. PRTN3 contains a 1 peptidase S1 domain. Among its related pathways are immune system and cytokine signaling in the immune system. PRTN3 degrades elastin, fibronectin, laminin, vitronectin, and collagen types I, III, and IV (in vitro) and causes emphysema when administered by tracheal insufflation to hamsters. Diseases associated with PRTN3 include Wegener Granulomatosis and Rapidly Progressive Glomerulonephritis.

Product Info

Amount :	40 µg
Purification :	Protein A chromatography
Content :	0.5 mg/ml, lyophilized with PBS, pH 7.4, containing 0.02% sodium azide.
Storage condition :	The antibody is stable in lyophilized form if stored at -20°C or below. The reconstituted antibody can be stored for 2-3 weeks at 2-8°C. For long term storage, aliquot and store at -20°C or below. Avoid repeated freezing and thawing cycles.

Application Note

ELISA detection: 0.01-0.1 µg/ml
Western blot: 1-2 µg/ml

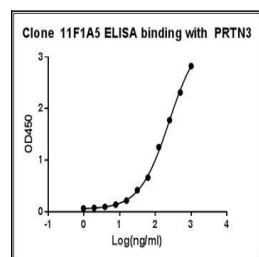


Figure-1 : ELISA binding of PRTN3 Antibody (Clone: 11F1A5) with Human PRTN3 recombinant protein, Coating antigen: PRTN3 at 1 µg/ml, PRTN3 antibody dilutions start from 1000 ng/ml, EC50= 9.667 ng/ml.

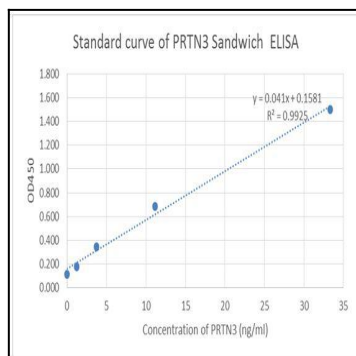


Figure-2 : Standard curve of PRTN3 Sandwich ELISA. The PRTN3 Sandwich ELISA assay is developed by using Human PRTN3 Antibody (Clone: 11F1A5) and Biotin conjugated Human PRTN3 Antibody (Clone: 15E12D7) as capture and detect antibody respectively, The sensitivity is <1 ng/ml and the detection range is 0-100 ng/ml

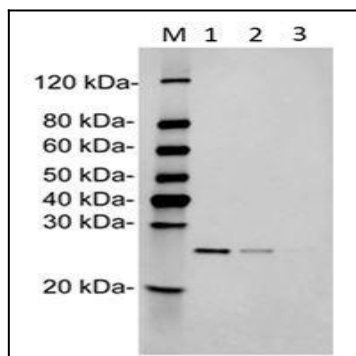


Figure-3 : Western blot analysis of PRTN3 Antibody (Clone: 11F1A5) at 1 µg/ml on Human PRTN3 recombinant protein (1-3: 50ng, 10ng & 5ng), IRDye 800 conjugated Goat anti-Mouse IgG was used as Secondary Antibody at 0.125 µg/ml.