

## 45-1113: Mouse Monoclonal Antibody to Human BTG3 (Clone : 12B4)(Discontinued)

<b>Clonality :</b>	Monoclonal
<b>Clone Name :</b>	12B4
<b>Application :</b>	ELISA
<b>Gene :</b>	BTG3
<b>Gene ID :</b>	10950
<b>Uniprot ID :</b>	Q14201
<b>Format :</b>	Purified
<b>Alternative Name :</b>	Abundant in neuroepithelium area protein, ANA, B-cell translocation gene 3, BTG family member 3, BTG family, member 3, BTG3, Protein BTG3, Protein Tob5, TOB5
<b>Isotype :</b>	Mouse IgG1,K
<b>Immunogen Information :</b>	Recombinant Human BTG3

### Description

Protein BTG3 (BTG Anti-Proliferation Factor 3) is a member of the BTG/Tob family. This family has structurally related proteins that appear to have antiproliferative properties. Protein BTG3 might play a role in neurogenesis in the central nervous system. Among its related pathways are deadenylation-dependent mRNA decay. Overexpression of BTG3 impairs serum-induced cell cycle progression from the G0/G1 to S phase.

### Product Info

<b>Amount :</b>	40 µg
<b>Purification :</b>	Protein A chromatography
<b>Content :</b>	0.5 mg/ml, lyophilized with PBS, pH 7.4, containing 0.02% sodium azide.
<b>Storage condition :</b>	The antibody is stable in lyophilized form if stored at -20°C or below. The reconstituted antibody can be stored for 2-3 weeks at 2-8°C. For long term storage, aliquot and store at -20°C or below. Avoid repeated freezing and thawing cycles.

### Application Note

ELISA detection: 0.05-0.1 µg/ml  
Western blot: 1-2 µg/ml

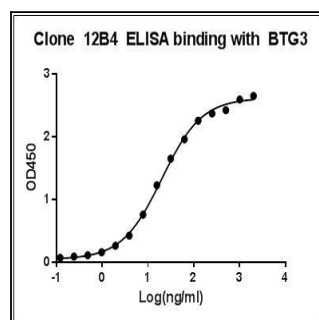


Figure-1 : ELISA binding of BTG3 Antibody (Clone: 12B4) with Human BTG3 recombinant protein, Coating antigen: BTG3 at 1 µg/ml, BTG3 antibody dilution start from 1000 ng/ml, EC50= 20.08 ng/ml.

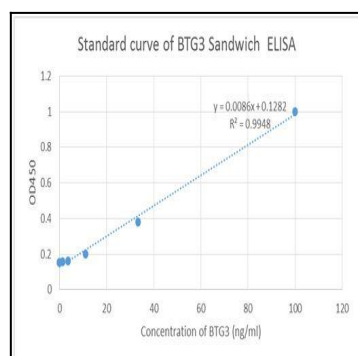


Figure-2 : Standard curve of BTG3 Sandwich ELISA, The BTG3 Sandwich ELISA assay is developed by using Human BTG3 Antibody (Clone: 12B4) and Biotin conjugated Human BTG3 Antibody (Clone: 10A8) as capture and detect antibody respectively, The sensitivity is 1-3 ng/ml and the detection range is 0-100 ng/ml

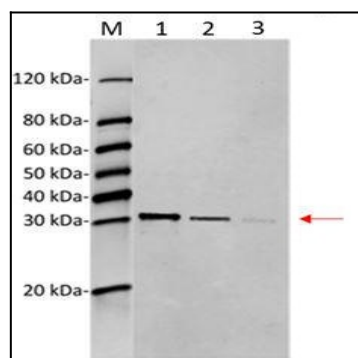


Figure-3 : Western blot analysis of BTG3 Antibody (Clone: 12B4) at 1 µg/ml on Human BTG3 recombinant protein (1-3: 50 ng, 25 ng, 10 ng), IRDye 800 conjugated Goat anti-Mouse IgG was used as Secondary Antibody at 0.125 µg/ml.