

## 45-1115: Mouse Monoclonal Antibody to Human KRT20 (Clone : 13F8)(Discontinued)

<b>Clonality :</b>	Monoclonal
<b>Clone Name :</b>	13F8
<b>Application :</b>	ELISA
<b>Gene :</b>	KRT20
<b>Gene ID :</b>	54474
<b>Uniprot ID :</b>	P35900
<b>Format :</b>	Purified
<b>Alternative Name :</b>	CK-20, CK20, cytokeratin 20, Cytokeratin-20, K20, keratin, keratin 20, type I, Keratin, type I cytoskeletal 20, Keratin-20, KRT21, Protein IT, type I cytoskeletal 20
<b>Isotype :</b>	Mouse IgG2b,Kappa
<b>Immunogen Information :</b>	Recombinant Human KRT20

### Description

Keratin-20 is a member of the keratin family. The keratins are intermediate filament proteins responsible for the structural integrity of epithelial cells and are subdivided into cytokeratins and hair keratins. KRT20 plays a significant role in maintaining keratin filament organization in intestinal epithelia. When phosphorylated, it plays a role in the secretion of mucin in the small intestine. Diseases associated with KRT20 include Merkel cell carcinoma and ovarian Brenner tumor. Among its related pathways are cytoskeletal signaling and developmental biology.

### Product Info

<b>Amount :</b>	40 µg
<b>Purification :</b>	Protein A chromatography
<b>Content :</b>	0.5 mg/ml, lyophilized with PBS, pH 7.4, containing 0.02% sodium azide.
<b>Storage condition :</b>	The antibody is stable in lyophilized form if stored at -20°C or below. The reconstituted antibody can be stored for 2-3 weeks at 2-8°C. For long term storage, aliquot and store at -20°C or below. Avoid repeated freezing and thawing cycles.

### Application Note

ELISA detection: 0.01-0.1 µg/ml

Western blot: 1-2 µg/ml

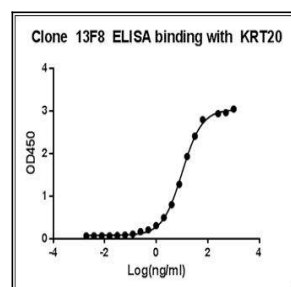


Figure-1 : ELISA binding of KRT20 Antibody (Clone: 13F8) with Human KRT20 recombinant protein, Coating antigen: KRT20 at 1 µg/ml, KRT20 antibody dilutions start from 1000 ng/ml, EC50= 10.03 ng/ml

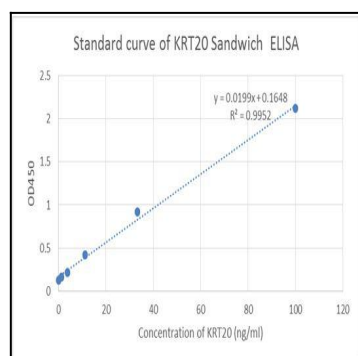


Figure-2 : Standard curve of KRT20 Sandwich ELISA. The KRT20 Sandwich ELISA assay is developed by using Human KRT20 Antibody (Clone: 13F8) and Biotin conjugated Human KRT20 Antibody (Clone: 5G4) as capture and detect antibody respectively, The sensitivity is <1 ng/ml and the detection range is 0-100 ng/ml.

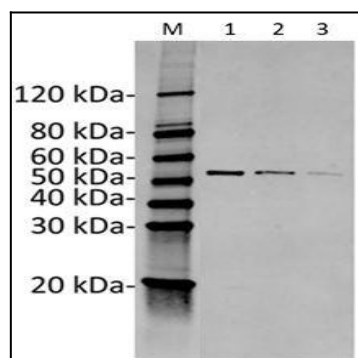


Figure-3 : Western blot analysis of KRT20 Antibody (Clone: 13F8) at 1 µg/ml on Human KRT20 recombinant protein (1-3: 50 ng, 25 ng, 10 ng respectively), IRDye 800 conjugated Goat anti-Mouse IgG was used as Secondary Antibody at 0.125 µg/ml.