

## 10-4189-F: Monoclonal Antibody to CD19 (clone: AE1) FITC Conjugated

<b>Clonality :</b>	Monoclonal
<b>Clone Name :</b>	AE1
<b>Application :</b>	FACS
<b>Reactivity :</b>	Human
<b>Conjugate :</b>	FITC
<b>Gene :</b>	CD19
<b>Gene ID :</b>	930
<b>Uniprot ID :</b>	P15391
<b>Format :</b>	Purified
<b>Alternative Name :</b>	B-lymphocyte antigen CD19, B-lymphocyte surface antigen B4, Differentiation antigen CD19, T-cell surface antigen Leu-12
<b>Isotype :</b>	Mouse IgG1

### Product Info

<b>Amount :</b>	100 µg
<b>Purification :</b>	Protein G Chromatography
<b>Content :</b>	25 µg in 125 µl/100 µg in 500 µl Tris containing 0.05% sodium azide. Sodium azide is highly toxic.
<b>Storage condition :</b>	Store the antibody at 4°C; stable for 6 months.

### Application Note

Flowcytometric Analysis: 0.5-1 µg/10<sup>6</sup> Cells

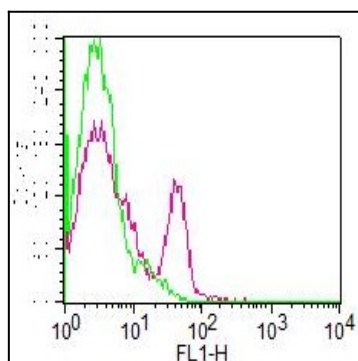


Fig 1. Cell surface staining of PBMC. Lymphocytes were gated. Green represents FITC conjugated Isotype control (Abeomics), Red represents CD19 (AE1) FITC. 0.5 µg antibodies were used.