

## 10-7501: Monoclonal antibody to TEM7 (Clone: ABM1D82)

<b>Clonality :</b>	Monoclonal
<b>Clone Name :</b>	ABM1D82
<b>Application :</b>	WB
<b>Reactivity :</b>	Human
<b>Gene :</b>	PLXDC1
<b>Gene ID :</b>	57125
<b>Uniprot ID :</b>	Q8IUK5
<b>Format :</b>	Purified
<b>Alternative Name :</b>	Tumor endothelial marker 3, Tumor endothelial marker 7, TEM3
<b>Isotype :</b>	Mouse IgG2b, Kappa
<b>Immunogen Information :</b>	A partial length recombinant protein of TEM7 (amino acid 270-480) was used as the immunogen for this antibody.

### Product Info

<b>Amount :</b>	25 µg / 100 µg
<b>Purification :</b>	Protein G Chromatography
<b>Content :</b>	25 µg in 50 µl/100 µg in 200 µl PBS containing 0.05% BSA and 0.05% sodium azide. Sodium azide is highly toxic.
<b>Storage condition :</b>	Store the antibody at 4°C, stable for 6 months. For long-term storage, store at -20°C. Avoid repeated freeze and thaw cycles.

### Application Note

Recommended dilutions: WB: 2-4 µg/ml. However, this need to be optimized based on the research applications.

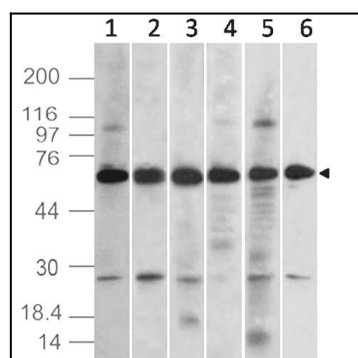


Figure-1: Western blot analysis of TEM7. Anti-TEM7 antibody (Clone: ABM1D82) was used at 2 µg/ml on (1) BT474, (2) MCF-7, (3) SKBR3, (4) A549, (5) Jurkat and (6) HepG2 lysates.