

## 10-4191-F: Rat NKG2A/C/E Monoclonal Antibody (Clone: WEN28) FITC Conjugated

<b>Clonality :</b>	Monoclonal
<b>Clone Name :</b>	WEN28
<b>Application :</b>	FACS
<b>Reactivity :</b>	Rat
<b>Conjugate :</b>	FITC
<b>Gene :</b>	NKG2A
<b>Gene ID :</b>	29683
<b>Uniprot ID :</b>	O54872
<b>Format :</b>	Purified
<b>Alternative Name :</b>	KLRC1, Killer Cell Lectin Like Receptor C1, KLRC2, Killer Cell Lectin Like Receptor C2, KLRC3, Killer Cell Lectin Like Receptor C3
<b>Isotype :</b>	Mouse IgG1, Kappa
<b>Immunogen Information :</b>	Recombinant rat NKG2A-Fc fusion protein was used as the immunogen for this antibody.

### Description

Reference: Per C. Saether, Sigurd E. Hoelsbrekken, Sigbjørn Fossum and Erik Dissen, J Immunol December 15, 2011, 187 (12) 6365-6373; DOI: <https://doi.org/10.4049/jimmunol.1102345>

### Product Info

<b>Amount :</b>	25 µg / 100 µg
<b>Purification :</b>	Protein G Chromatography
<b>Content :</b>	25 µg in 100 µl/100 µg in 500 µl Tris and 0.05% sodium azide. Sodium azide is highly toxic.
<b>Storage condition :</b>	Store the antibody at 4°C; stable for 6 months.

### Application Note

Flow cytometric analysis: 2-4 µg/10<sup>6</sup>

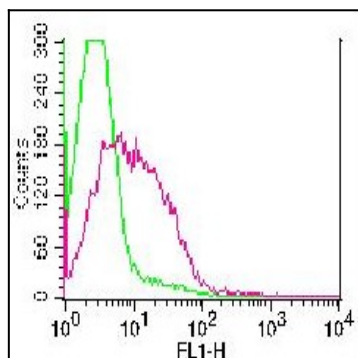


Figure-1: Cell surface staining of rat splenocytes. Green: FITC conjugated isotype control. Red: FITC conjugated Anti-rat NKG2a (10-4191F). ). 5 µg antibody was used.