

## 11-4077: Polyclonal Antibody to ROR alpha

<b>Clonality :</b>	Polyclonal
<b>Application :</b>	WB
<b>Reactivity :</b>	Human
<b>Gene :</b>	RORA
<b>Gene ID :</b>	6095
<b>Uniprot ID :</b>	P35398
<b>Format :</b>	Purified
<b>Alternative Name :</b>	Nuclear receptor RZR-alpha, Nuclear receptor subfamily 1 group F member 1, RAR-related orphan receptor A, Retinoid-related orphan receptor-alpha, NR1F1, RZRA
<b>Isotype :</b>	Rabbit IgG
<b>Immunogen Information :</b>	A partial length recombinant ROR alpha protein (amino acids 220-440) was used as the immunogen for this antibody.

### Product Info

<b>Amount :</b>	25 µg / 100 µg
<b>Purification :</b>	Protein A Chromatography
<b>Content :</b>	25 µg in 50 µl/100 µg in 200 µl PBS containing 0.05% BSA and 0.05% sodium azide. Sodium azide is highly toxic.
<b>Storage condition :</b>	Store the antibody at 4°C, stable for 6 months. For long-term storage, store at -20°C. Avoid repeated freeze and thaw cycles.

### Application Note

Recommended dilutions: WB: 1-2 µg/ml. However, this need to be optimized based on the research applications.

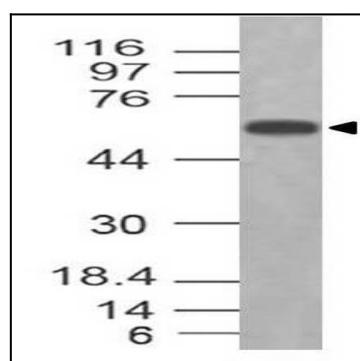


Figure-1: Western blot analysis of ROR alpha. Anti-ROR alpha antibody (11-4077) was used at 1 µg/ml on h Pancrease lysate.