

## 10-4188-F: Monoclonal Antibody to CD24 (Clone: 32D12) FITC Conjugated

<b>Clonality :</b>	Monoclonal
<b>Clone Name :</b>	32D12
<b>Application :</b>	FACS
<b>Reactivity :</b>	Human
<b>Conjugate :</b>	FITC
<b>Gene :</b>	CD24
<b>Gene ID :</b>	100133941
<b>Uniprot ID :</b>	P25063
<b>Format :</b>	Purified
<b>Alternative Name :</b>	Signal transducer CD24, Small cell lung carcinoma cluster 4 antigen
<b>Isotype :</b>	Mouse IgG1, kappa

### Description

The antigen is CD24 with a molecular weight of 35 - 45kD. The epitope has not been further characterized. Antigen distribution: Isolated cells: granulocytes. Tissue sections: B-cells (germinal centers weak); follicular dendritic cells; variety of epithelial cell types.

### Product Info

<b>Amount :</b>	25 µg / 100 µg
<b>Purification :</b>	Protein G Chromatography
<b>Content :</b>	25 µg in 125 µl/100 µg in 500 µl Tris containing 0.05% sodium azide. Sodium azide is highly toxic.
<b>Storage condition :</b>	Store the antibody at 4°C; stable for 6 months.

### Application Note

Flowcytometric Analysis: 0.5-1 µg/10<sup>6</sup> Cells

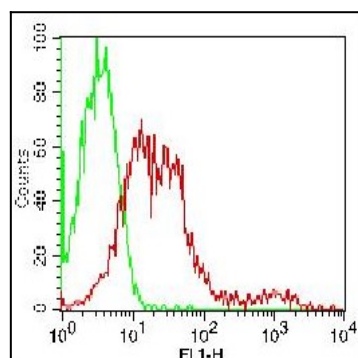


Fig.1: Cell surface staining of PBMC (lymphocytes gated). Green represents FITC conjugated isotope control. Red represents FITC conjugated anti-CD24 (10-4188-F), clone 32D12. 0.5 µg antibody was used.