

10-4195-F: Monoclonal Antibody to CD37 (Clone: HH1) FITC Conjugated

Clonality :	Monoclonal
Clone Name :	HH1
Application :	FACS
Reactivity :	Human
Conjugate :	FITC
Gene :	CD37
Gene ID :	951
Uniprot ID :	P11049
Format :	Purified
Alternative Name :	Leukocyte antigen CD37, Tetraspanin-26, Tspan-26
Isotype :	IgG1 Kappa

Description

CD37 is an internalizing B-cell antigen expressed on Non-Hodgkin lymphoma (NHL) and chronic lymphocytic leukemia cells (CLL).

Product Info

Amount :	25 µg / 100 µg
Purification :	Protein G Chromatography
Content :	25 µg in 125 µl/100 µg in 500 µl Tris containing 0.05% sodium azide. Sodium azide is highly toxic.
Storage condition :	Store the antibody at 4°C; stable for 6 months.

Application Note

Flowcytometry Analysis: 0.5 -1 µg

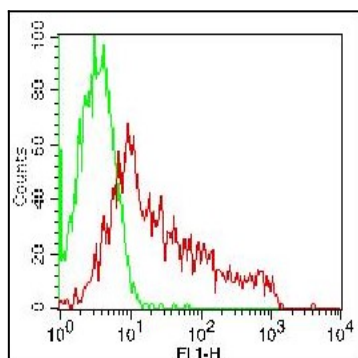


Fig. 1: Cell surface staining of PBMC (lymphocytes gated). Green represents FITC conjugated Isotype control (ABEOMICS). Red represents FITC conjugated anti-CD37 clone HH1 (10-4195-F). 0.5 µg antibodies were used.