

## 10-4194-F: Monoclonal Antibody to Rat NKp46 (Clone: WEN23) FITC Conjugated

<b>Clonality :</b>	Monoclonal
<b>Clone Name :</b>	WEN23
<b>Application :</b>	FACS
<b>Reactivity :</b>	Rat
<b>Conjugate :</b>	FITC
<b>Gene :</b>	Ncr1
<b>Gene ID :</b>	117547.
<b>Uniprot ID :</b>	Q9Z0H5
<b>Format :</b>	Purified
<b>Alternative Name :</b>	Natural cytotoxicity triggering receptor 1, Activating receptor 1, Lymphocyte antigen 94 homolog, NK receptor KILR-1, Natural killer cell p46-related protein, CD335
<b>Isotype :</b>	Mouse IgG1, Kappa
<b>Immunogen Information :</b>	Recombinant rat NKp46 ectodomain coupled to the Fc portion of mouse IgG2b was used as the immunogen for this antibody.

### Description

Rat NKp46 is an activating receptor expressed on all NK cells in all rat strains tested. NKp46 is the defining surface marker for rat NK cells. No expression of NKp46 has so far been reported on non-NK cells in the rat. NKp46 associates with the activating adaptor proteins FcepsilonRIgamma and CD3zeta and activates NK cell cytotoxicity and IFNgamma production.

### Product Info

<b>Amount :</b>	25 µg / 100 µg
<b>Purification :</b>	Protein G Chromatography
<b>Content :</b>	25 µg in 125 µl/100 µg in 500 µl Tris containing sodium azide. Sodium azide is highly toxic.
<b>Storage condition :</b>	Store the antibody at 4°C; stable for 6 months.

### Application Note

Facs analysis: 1-2 µg/10<sup>6</sup> Cells

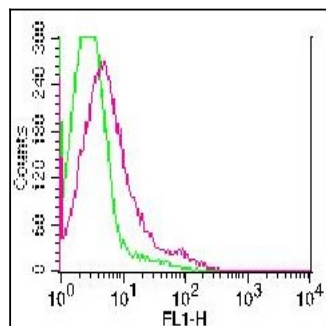


Figure-1: Cell surface staining of rat splenocytes. Green represents FITC conjugated isotype control, red represents FITC conjugated anti-rat NKp46 (10-4194-F) antibody. 0.2 µg/antibody was used.