

10-4181-F: Monoclonal Antibody to HLADR (Clone: AB3) FITC Conjugated

Clonality :	Monoclonal
Clone Name :	AB3
Application :	FACS
Reactivity :	Human
Conjugate :	FITC
Gene :	HLA-DRA
Gene ID :	3122
Uniprot ID :	P01903
Format :	Purified
Alternative Name :	HLA-DRA, HLA-DRA1
Isotype :	Mouse IgG2a

Description

The HLA-DRA gene at 6p21.3 is one of the HLA class II alpha chain paralogues, and it plays a central role in the immune system by presenting peptides derived from extracellular proteins. Unlike the alpha chains of other Human MHC class II molecules, the alpha subunit is practically invariable. The promoter for the HLA-DRA is the most well studied, and it contains sites, from 5' to 3', for the trimeric RFX, CREB, the trimeric NF-Y, Oct-1, and YY1. RFX, CREB, and NF-Y contribute to the binding of the CIITA co-activator, which is either constitutively expressed in cells that constitutively express the MHC class II genes, or is induced by IFN-gamma activation of STAT1alpha. The beta-2 domain of the conserved HLA-DR alpha molecule encoded by the HLA-DRA1 locus interacts with the CD4 molecule in human lymphocytes. Class II molecules are expressed in antigen presenting cells (APC: B lymphocytes, dendritic cells, macrophages).

Product Info

Amount :	25 µg / 100 µg
Purification :	Protein G Chromatography
Content :	25 µg in 125 µl/100 µg in 500 µl Tris containing 0.05% sodium azide. Sodium azide is highly toxic.
Storage condition :	Store the antibody at 4°C; stable for 6 months.

Application Note

Flowcytometric analysis : 0.2-0.5 µg/10⁶ Cells

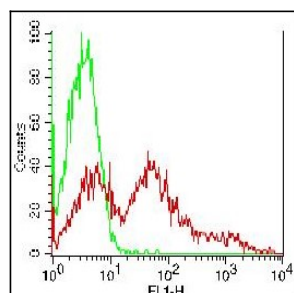


Fig.1: Cell surface staining of PBMC (lymphocytes gated). Green: FITC conjugated Isotope control (Abeomics). Red: FITC conjugated anti-HLADR (10-4181F), clone AB3. 0.2 µg/antibodies were used.