

## 12-1161: Anti-Cytokeratin 8 (KRT8) Recombinant Rabbit Monoclonal Antibody (Clone:KRT8/2174R)

<b>Clonality :</b>	Monoclonal
<b>Clone Name :</b>	KRT8/2174R
<b>Application :</b>	WB,IHC
<b>Reactivity :</b>	Human
<b>Gene :</b>	KRT8
<b>Gene ID :</b>	3856
<b>Uniprot ID :</b>	P05787
<b>Format :</b>	Purified
<b>Alternative Name :</b>	CARD2; CK8; CYK8; CYKER; Cytokeratin Endo A; DreK8; EndoA; K2C8; K8; Keratin 8; Krt 2.8; KRT8; Type-II Keratin Kb8
<b>Isotype :</b>	Rabbit IgG
<b>Immunogen Information :</b>	Cytoskeletal preparation from HeLa cells

### Description

Cytokeratin 8 (CK8) belongs to the type II (or B or basic) subfamily of high molecular weight cytokeratins and exists in combination with cytokeratin 18 (CK18). CK8 is primarily found in the non-squamous epithelia and is present in majority of adenocarcinomas and ductal carcinomas. It is absent in squamous cell carcinomas. Hepatocellular carcinomas are defined by the use of antibodies that recognize only cytokeratin 8 and 18. CK8 exists on several types of normal and neoplastic epithelia, including many ductal and glandular epithelia such as colon, stomach, small intestine, trachea, and esophagus as well as in transitional epithelium. Anti-CK8 does not react with skeletal muscle or nerve cells. Epithelioid sarcoma, chordoma, and adamantinoma show strong positivity corresponding to that of simple epithelia (with antibodies against CK8, CK18 and CK19). Reportedly, anti-CK8 is useful for the differentiation of lobular ( ring-like, perinuclear ) from ductal ( peripheral-predominant ) carcinoma of the breast.

### Product Info

<b>Amount :</b>	20 µg / 100 µg
<b>Purification :</b>	Protein A/G
<b>Content :</b>	200µg/ml of recombinant MAb purified by Protein A/G. Prepared in 10mM PBS with 0.05% BSA & 0.05% azide. Also available WITHOUT BSA & azide at 1.0mg/ml.
<b>Storage condition :</b>	Antibody with azide - store at 2 to 8°C. Antibody without azide - store at -20 to -80°C. Antibody is stable for 24 months. Non-hazardous.

### Application Note

Western Blot (1-2Âµg/ml); Immunohistochemistry (Formalin-fixed) (1-2Âµg/ml for 30 min at RT)(Staining of formalin-fixed tissues is enhanced by heating tissue sections in 10mM Tris with 1mM EDTA, pH 9.0 for 45 min at 95&degC followed by cooling at RT for 20 minutes)

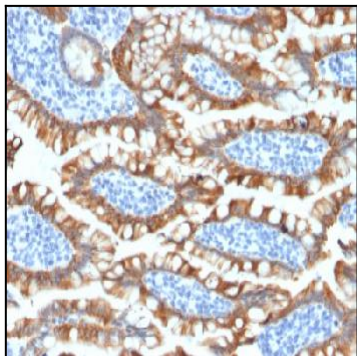


Figure 1: Formalin-fixed, paraffin-embedded human Small Intestine stained with Cytokeratin 8 Rabbit Recombinant Monoclonal Antibody (KRT8/2174R).

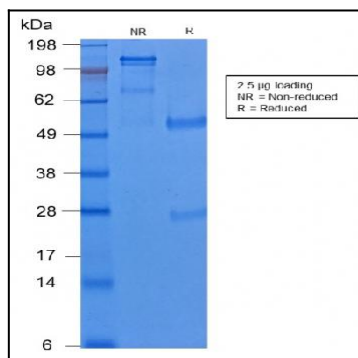


Figure 2: SDS-PAGE Analysis of Purified Cytokeratin 8 Rabbit Recombinant Monoclonal Antibody (KRT8/2174R).