

12-1153: Anti-Cytokeratin 10 (Suprabasal Epithelial Marker) Recombinant Rabbit Monoclonal Antibody (Clone:KRT10/1948R)

Clonality :	Monoclonal
Clone Name :	KRT10/1948R
Application :	IHC
Reactivity :	Human
Gene :	KRT10
Gene ID :	3858
Uniprot ID :	P13645
Format :	Purified
Alternative Name :	BCIE, BIE, EHK, Keratin Type I Cytoskeletal 10, KRT10
Isotype :	Rabbit IgG
Immunogen Information :	Recombinant full-length of human KRT10 protein

Description

This MAb recognizes a protein of 56.5kDa, identified as cytokeratin 10 (CK10). CK10 is expressed in all suprabasal layers of the epidermis. In the epidermis, expression of CK10 strictly parallels the extent of differentiation; it is absent in the basal layer, appears in the first suprabasal layers and increases in concentration towards the granular layer. However, CK10 is rarely detected in early stages of vulvar squamous carcinomas (tumors less than 2 cm, clinical stage I) regardless of the tumor grade. In larger and more advanced tumors (greater than 2 cm, clinical stages II and III), CK10 is detected very frequently. Expression of CK10 is related to maturation of malignant keratinocytes, being preferentially detected in more-differentiated parts.

Product Info

Amount :	20 µg / 100 µg
Purification :	Protein A/G
Content :	200µg/ml of recombinant MAb purified by Protein A/G. Prepared in 10mM PBS with 0.05% BSA & 0.05% azide. Also available WITHOUT BSA & azide at 1.0mg/ml.
Storage condition :	Antibody with azide - store at 2 to 8°C. Antibody without azide - store at -20 to -80°C. Antibody is stable for 24 months. Non-hazardous.

Application Note

Immunohistochemistry (Formalin-fixed) (0.1-0.2 µg/ml for 30 min at RT)(Staining of formalin-fixed tissues requires heating tissue sections in 10mM Tris with 1mM EDTA, pH 9.0, for 45 min at 95°C followed by cooling at RT for 20 minutes);

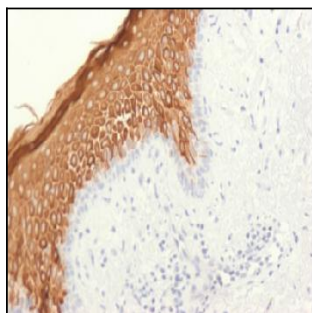


Figure 1: Formalin-fixed, paraffin-embedded human skin stained with Cytokeratin 10 Rabbit Recombinant Monoclonal Antibody (KRT10/1948R).

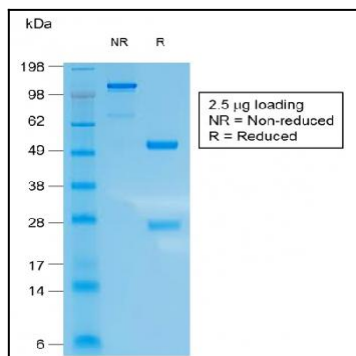


Figure 2: SDS-PAGE Analysis of Purified Cytokeratin 10 Rabbit Recombinant Monoclonal Antibody (KRT10/1948R).