

## 12-1158: Anti-Cytokeratin 19 (KRT19) (Pancreatic Stem Cell Marker) Recombinant Rabbit Monoclonal Antibody (Clone:KRT19/1959R)

<b>Clonality :</b>	Monoclonal
<b>Clone Name :</b>	KRT19/1959R
<b>Application :</b>	WB,IHC
<b>Reactivity :</b>	Human, Mouse
<b>Gene :</b>	KRT19
<b>Gene ID :</b>	3880
<b>Uniprot ID :</b>	P08727
<b>Format :</b>	Purified
<b>Alternative Name :</b>	k19; k1cs; Keratin 19 Keratin Type i 40kD; krt19
<b>Isotype :</b>	Rabbit IgG
<b>Immunogen Information :</b>	Recombinant full-length human KRT19 protein

### Description

This Ab reacts with the rod domain of human cytokeratin 19 (CK19), a polypeptide of 40kDa. CK19 is expressed in sweat gland, mammary gland ductal and secretory cells, bile ducts, gastrointestinal tract, bladder urothelium, oral epithelia, esophagus, and ectocervical epithelium. Anti-CK19 reacts with a wide variety of epithelial malignancies including adenocarcinomas of the colon, stomach, pancreas, biliary tract, liver, and breast. Perhaps the most useful application is the identification of thyroid carcinoma of the papillary type, although 50%-60% of follicular carcinomas are also labeled. Anti-CK19 is a useful marker for detection of tumor cells in lymph nodes, peripheral blood, bone marrow and breast cancer.

### Product Info

<b>Amount :</b>	20 µg / 100 µg
<b>Purification :</b>	Protein A/G
<b>Content :</b>	200µg/ml of recombinant MAb purified by Protein A/G. Prepared in 10mM PBS with 0.05% BSA & 0.05% azide. Also available WITHOUT BSA & azide at 1.0mg/ml.
<b>Storage condition :</b>	Antibody with azide - store at 2 to 8°C. Antibody without azide - store at -20 to -80°C. Antibody is stable for 24 months. Non-hazardous.

### Application Note

Western Blot (1-2µg/ml); Immunohistochemistry (Formalin-fixed) (1-2µg/ml for 30 min at RT), (Staining of formalin-fixed tissues requires heating tissue sections in 10mM Tris with 1mM EDTA, pH 9.0, for 45 min at 95°C followed by cooling at RT for 20 minutes);

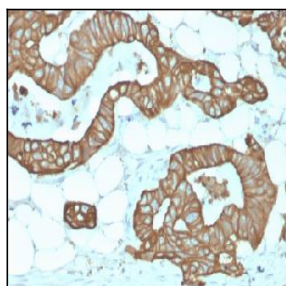


Figure 1: Formalin-fixed, paraffin-embedded human Colon stained with Cytokeratin 19 Rabbit Recombinant Monoclonal Antibody (KRT19/1959R).

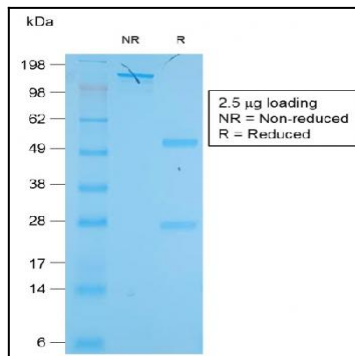


Figure 2: SDS-PAGE Analysis of Purified Cytokeratin 19 Rabbit Recombinant Monoclonal Antibody (KRT19/1959R).