

12-1242: Anti-Smooth Muscle Myosin Heavy Chain (SM-MHC) Recombinant Rabbit Monoclonal Antibody (Clone:MYH11/2303R)

Clonality :	Monoclonal
Clone Name :	MYH11/2303R
Application :	IHC
Reactivity :	Human, Rat
Gene :	MYH11
Gene ID :	4629
Uniprot ID :	P35749
Format :	Purified
Alternative Name :	AAT4; Myosin heavy chain 11 (MYH11); Myosin heavy chain 11 smooth muscle; Smooth muscle myosin heavy chain 11; Myosin-11; SM1; SM2; SMHC; SMMHC
Isotype :	Rabbit IgG
Immunogen Information :	Human full-length recombinant MYH11 protein

Description

Smooth muscle myosin heavy chain (SM-MHC) is a cytoplasmic structural protein, which is a major component of the contractile apparatus in smooth muscle cells. Expression of smooth muscle myosin is developmentally regulated, appearing early in smooth muscle development, and is specific for smooth muscle development. Two isoforms of smooth muscle myosin heavy chain have been identified, designated MHC-1 and MHC-2. The antibody may be useful for the study of breast tumors as the presence of an intact layer of myoepithelial cells is an important feature, which may distinguish benign breast lesions and carcinoma in situ from invasive tumors.

Product Info

Amount :	20 µg / 100 µg
Purification :	Protein A/G
Content :	200µg/ml of recombinant MAb purified by Protein A/G. Prepared in 10mM PBS with 0.05% BSA & 0.05% azide. Also available WITHOUT BSA & azide at 1.0mg/ml.
Storage condition :	Antibody with azide - store at 2 to 8°C. Antibody without azide - store at -20 to -80°C. Antibody is stable for 24 months. Non-hazardous.

Application Note

Immunohistochemistry (Formalin-fixed) (1-2Âµg/ml for 30 minutes at RT)(Staining of formalin-fixed tissues requires heating tissue sections in 10mM Tris with 1mM EDTA, pH 9.0, for 45 min at 95°C followed by cooling at RT for 20 minutes);

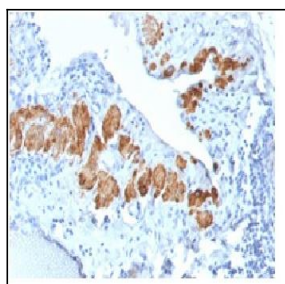


Figure 1: Formalin-fixed, paraffin-embedded Human Breast tissue stained with SM-MHC Rabbit Recombinant Monoclonal Antibody (MYH11/2303R).

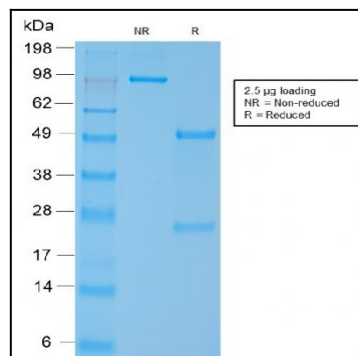


Figure 2: SDS-PAGE Analysis of Purified SM-MHC Rabbit Recombinant Monoclonal Antibody (MYH11/2303R).