

12-1237: Anti-PAX5 / BSAP (Early B-Cell Marker) Recombinant Mouse Monoclonal Antibody (Clone:rPAX5/2060)

Clonality :	Monoclonal
Clone Name :	rPAX5/2060
Application :	ELISA, WB
Reactivity :	Human
Gene :	PAX5
Gene ID :	5079
Uniprot ID :	Q02548
Format :	Purified
Alternative Name :	B cell lineage specific activator; BSAP; EBB-1; KLP; Paired box 5
Isotype :	Mouse IgG1, kappa
Immunogen Information :	Recombinant full-length human PAX5 protein

Description

The specificity of this monoclonal antibody to its intended target was validated by HuProt™ Array, containing more than 19,000, full-length human proteins. The PAX5 gene is a member of the paired box (PAX) family of transcription factors. The central feature of this gene family is a novel, highly conserved DNA-binding domain, known as the paired box. The PAX proteins are important regulators in early development, and alterations in the expression of their genes are thought to contribute to neoplastic transformation. The PAX5 gene encodes the B-cell lineage specific activator protein (BSAP) that is expressed at early, but not late stages of B-cell differentiation. Its expression has also been detected in developing CNS and testis; therefore, PAX5 gene product may not only play an important role in B-cell differentiation, but also in neural development and spermatogenesis.

Product Info

Amount :	20 µg / 100 µg
Purification :	Protein A/G
Content :	200µg/ml of recombinant MAb purified by Protein A/G. Prepared in 10mM PBS with 0.05% BSA & 0.05% azide. Also available WITHOUT BSA & azide at 1.0mg/ml.
Storage condition :	Antibody with azide - store at 2 to 8°C. Antibody without azide - store at -20 to -80°C. Antibody is stable for 24 months. Non-hazardous.

Application Note

ELISA (For coating, purchase antibody without BSA); Western Blot (1-2Âµg/ml);

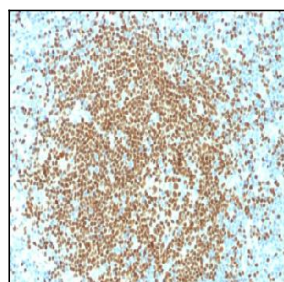


Figure 1: Formalin-fixed, paraffin-embedded Human Lymph Node stained with PAX5 Mouse Recombinant Monoclonal Antibody (rPAX5/2060).

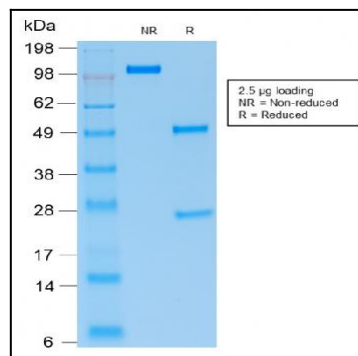


Figure 2: SDS-PAGE Analysis Purified PAX5 Mouse Recombinant Monoclonal Antibody (rPAX5/2060).