

12-1073: Anti-Bcl-2 (Apoptosis and Follicular Lymphoma Marker) Recombinant Mouse Monoclonal Antibody (Clone:rBCL2/782)

Clonality :	Monoclonal
Clone Name :	rBCL2/782
Application :	FACS,IF,WB,IHC
Reactivity :	Human
Gene :	BCL2
Gene ID :	596
Uniprot ID :	P10415
Format :	Purified
Alternative Name :	Apoptosis regulator Bcl-2, B-cell CLL/lymphoma-2
Isotype :	Mouse IgG1, kappa
Immunogen Information :	Recombinant full-length human bcl-2 protein

Description

This antibody recognizes a protein of 25-26kDa, identified as the bcl-2?lpha oncoprotein. It shows no cross-reaction with Bcl-x or Bax protein. Expression of bcl-2?lpha oncoprotein inhibits the programmed cell death (apoptosis). In most follicular lymphomas, neoplastic germinal centers express high levels of bcl-2?lpha protein, whereas the normal or hyperplastic germinal centers are negative. Consequently, this antibody is valuable when distinguishing between reactive and neoplastic follicular proliferation in lymph node biopsies. It may also be used in distinguishing between those follicular lymphomas that express bcl-2 protein and the small number in which the neoplastic cells are bcl-2 negative.

Product Info

Amount :	20 µg / 100 µg
Purification :	Protein A/G
Content :	200µg/ml of recombinant MAb purified by Protein A/G. Prepared in 10mM PBS with 0.05% BSA & 0.05% azide. Also available WITHOUT BSA & azide at 1.0mg/ml.
Storage condition :	Antibody with azide - store at 2 to 8°C. Antibody without azide - store at -20 to -80°C. Antibody is stable for 24 months. Non-hazardous.

Application Note

Flow Cytometry (1-2Âµg/million cells); ,Immunofluorescence (1-2Âµg/ml); Western Blot (1-2Âµg/ml); ,Immunohistochemistry (Formalin-fixed) (1-2Âµg/ml for 30 minutes at RT),(Staining of formalin-fixed tissues requires heating tissue sections in 10mM Tris with 1mM EDTA, pH 9.0, for 45 min at 95 °C followed by cooling at RT for 20 minutes),

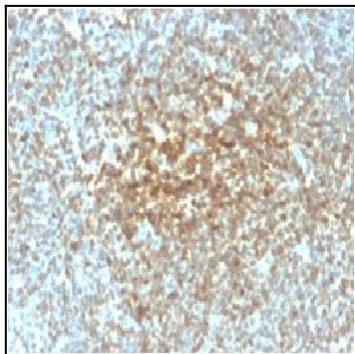


Figure 1: Formalin-fixed, paraffin-embedded human Follicular Lymphoma stained with Bcl-2 Mouse Recombinant Monoclonal Antibody (rBCL2/782).

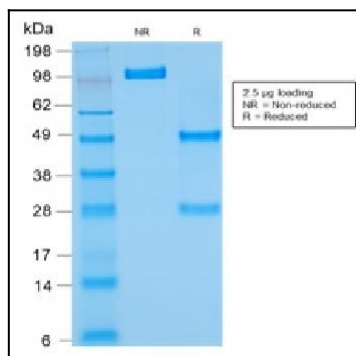


Figure 2: SDS-PAGE Analysis of Purified Bcl-2 Mouse Recombinant Monoclonal Antibody (rBCL2/782).