

12-1265: Anti-von Willebrand Factor / Factor VIII Related-Ag (Endothelial Marker) Recombinant Mouse Monoclonal Antibody (Clone:rVWF/1465)

Clonality :	Monoclonal
Clone Name :	rVWF/1465
Application :	WB,IP,IHC
Reactivity :	Human
Gene :	VWF
Gene ID :	7450
Uniprot ID :	P04275
Format :	Purified
Alternative Name :	Coagulation Factor VIII, Factor VIII Related Antigen, F8VWF, von Willebrand Antigen 2, von Willebrand Disease (vWD)
Isotype :	Mouse IgG1, kappa
Immunogen Information :	Recombinant fragment of human vWF protein (aa 1815-1939) (exact sequence is proprietary)

Description

von Willebrand Factor (vWF) is a multimeric glycoprotein that is found in endothelial cells, plasma and platelets. It acts as a carrier protein for Factor VIII and promotes platelet adhesion and aggregation. vWF undergoes a variety of posttranslational modifications that influence the affinity and availability for Factor VIII, including cleavage of the propeptide and formation of N-terminal disulfide bonds. This antibody helps to establish the endothelial nature of some lesions of disputed histogenesis, e.g. Kaposi's sarcoma and cardiac myxoma. It is widely used for differentiating vascular lesions from those of other tissue differentiation within a panel of other vascular markers although not all tumors of endothelial differentiation contain this antigen.

Product Info

Amount :	20 µg / 100 µg
Purification :	Protein A/G
Content :	200µg/ml of recombinant MAb purified by Protein A/G. Prepared in 10mM PBS with 0.05% BSA & 0.05% azide. Also available WITHOUT BSA & azide at 1.0mg/ml.
Storage condition :	Antibody with azide - store at 2 to 8°C. Antibody without azide - store at -20 to -80°C. Antibody is stable for 24 months. Non-hazardous.

Application Note

Western Blot (1-2 µg/ml); Immunoprecipitation (0.5-1 µg/500 µg protein lysate); Immunohistochemistry (Formalin-fixed) (1-2 µg/ml for 30 minutes at RT) (Staining of formalin-fixed tissues requires heating tissue sections in 10mM Tris with 1mM EDTA, pH 9.0, for 45 min at 95°C followed by cooling at RT for 20 minutes);

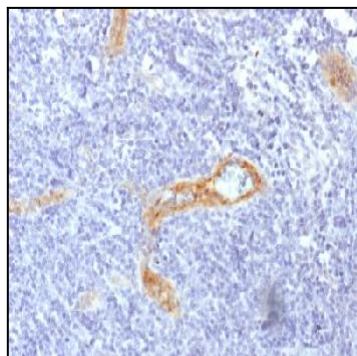


Figure 1: Formalin-fixed, paraffin-embedded human Tonsil stained with vWF Mouse Recombinant Monoclonal Antibody (rVWF/1465).

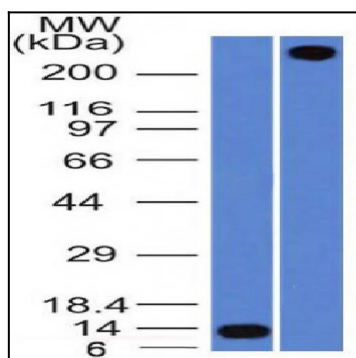


Figure 2: Western Blot Analysis A) Recombinant Protein (B) human lung lysate vWF Mouse Recombinant Monoclonal Antibody (rVWF/1465).

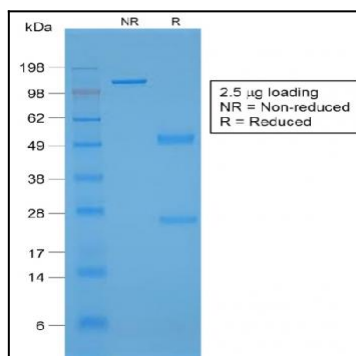


Figure 3: SDS-PAGE Analysis Purified vWF Mouse Recombinant Monoclonal Antibody (rVWF/1465).