

11-8118: Polyclonal Antibody to RISC

Clonality :	Polyclonal
Application :	WB
Reactivity :	Human
Gene :	SCPEP1
Gene ID :	59342
Uniprot ID :	Q9HB40
Format :	Purified
Alternative Name :	Serine carboxypeptidase 1, SCP1
Isotype :	Rabbit IgG
Immunogen Information :	A partial length recombinant RISC protein was used as the immunogen for this antibody.

Product Info

Amount :	25 µg / 100 µg
Purification :	Protein A Chromatography
Content :	25 µg in 50 µl/100 µg in 200 µl PBS containing 0.05% BSA and 0.05% sodium azide. Sodium azide is highly toxic.
Storage condition :	Store the antibody at 4°C, stable for 6 months. For long-term storage, store at -20°C. Avoid repeated freeze and thaw cycles.

Application Note

Recommended dilutions: WB: 1-2 µg/ml. However, this need to be optimized based on the research applications.

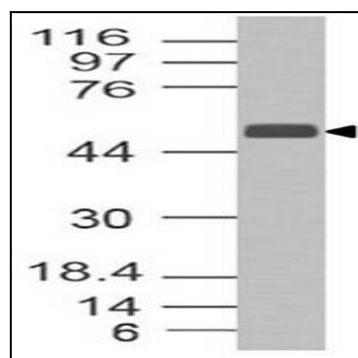


Figure-1: Western blot analysis of RISC. Anti-RISC antibody (11-8118) was used at 1 µg/ml on h Liver lysate.