

10-1061: Monoclonal Antibody to PINK1 (Clone: ABM5D85)

Clonality :	Monoclonal
Clone Name :	ABM5D85
Application :	WB
Reactivity :	Human
Gene :	PINK1
Gene ID :	65018
Uniprot ID :	Q9BXM7
Format :	Purified
Alternative Name :	Serine/threonine-protein kinase PINK1, mitochondrial, BRPK, PTEN-induced putative kinase protein 1
Isotype :	Mouse IgG2b kappa
Immunogen Information :	A partial length recombinant PINK1 protein (a.a 93-301) was used as the immunogen for this antibody.

Product Info

Amount :	25 µg / 100 µg
Purification :	Protein G Chromatography
Content :	25 µg in 50 µl/100 µg in 200 µl PBS containing 0.05% BSA and 0.05% sodium azide. Sodium azide is highly toxic.
Storage condition :	Store the antibody at 4°C; stable for 6 months. For long-term storage; store at -20°C. Avoid repeated freeze and thaw cycles

Application Note

Recommended dilutions: Western blot analysis at 2-4 µg/ml. However, this need to be optimized based on the research applications.

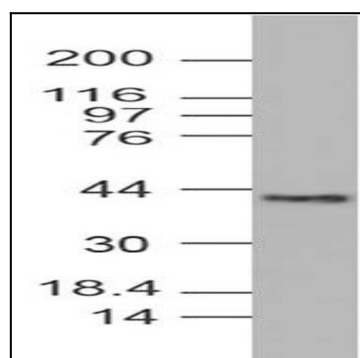


Figure-1: Western blot analysis of PINK1. Anti- PINK1 antibody (Clone: ABM5D85) was used at 2 µg/ml in human Heart lysate.