

#### 44-1023: Anti-CTLA-4 Monoclonal Antibody (Clone:IHC004)(Discontinued)

<b>Clonality :</b>	Monoclonal
<b>Clone Name :</b>	IHC004
<b>Application :</b>	IHC
<b>Reactivity :</b>	Human
<b>Gene :</b>	CTLA4
<b>Gene ID :</b>	1493
<b>Uniprot ID :</b>	P16410
<b>Format :</b>	Purified
<b>Alternative Name :</b>	CTLA4,CD152
<b>Immunogen Information :</b>	Recombinant Human CTLA-4

#### Description

Cytotoxic T-lymphocyte-associated protein 4 (CTLA-4) is a receptor on T Helper cells that functions as an immune checkpoint and downregulator of immune responses. Mutations in CTLA-4 are associated with insulin-dependent diabetes mellitus, Hashimoto's thyroiditis, Graves' disease, systemic lupus erythematosus (SLE), celiac disease, primary biliary cirrhosis, thyroid-associated orbitopathy, multiple sclerosis, and other autoimmune diseases. The spliced variant of CTLA-4 in SLE is present in the patient's serum. Haploinsufficiency of CTLA-4 causes the immune system disorder known as CTLA-4 deficiency or CHAI disease (CTLA4 haploinsufficiency with autoimmune infiltration).

#### Product Info

<b>Amount :</b>	7 ml
<b>Purification :</b>	Protein A/G Chromatography
<b>Content :</b>	Tris Buffer, pH 7.3 - 7.7, with 1% BSA and <0.1% Sodium Azide
<b>Storage condition :</b>	Store at 2°C - 8°C. Do not freeze.

#### Application Note

Recommended dilutions: Immunohistochemical analysis: 1:100 - 1:200. However, this need to be optimized based on the research applications.

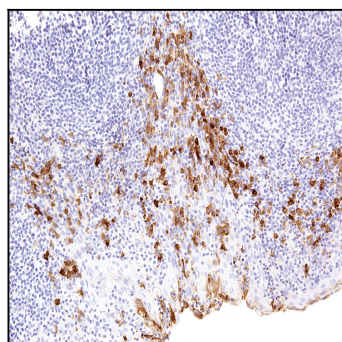


Figure 1: Immunohistochemical analysis of CTLA-4 (Clone: IHC004) on Tonsil