

**44-1027: Anti-Cytokeratin 18 Monoclonal Antibody (Clone:IHC018)**

<b>Clonality :</b>	Monoclonal
<b>Clone Name :</b>	IHC018
<b>Application :</b>	IHC
<b>Reactivity :</b>	Human
<b>Gene :</b>	KRT18
<b>Gene ID :</b>	3875
<b>Uniprot ID :</b>	P05783
<b>Format :</b>	Purified
<b>Alternative Name :</b>	KRT18,CYK18,PIG46
<b>Isotype :</b>	Mouse IgG2b, kappa
<b>Immunogen Information :</b>	Recombinant Human Cytokeratin 18

**Description**

Cytokeratin 18 (CK18) is present in simple, glandular, and transitional epithelial cells, but is absent in stratified epithelial cells. CK18 usually multimerizes with Cytokeratin 8, and Anti-Cytokeratin 18 is useful for detecting adenocarcinomas of simple and glandular epithelium origin, as well as poorly differentiated squamous carcinoma cells.

**Product Info**

<b>Amount :</b>	0.1 ml / 0.5 ml
<b>Purification :</b>	Protein A/G Chromatography
<b>Content :</b>	Tris Buffer, pH 7.3 - 7.7, with 1% BSA and <0.1% Sodium Azide
<b>Storage condition :</b>	Store at 2°C - 8°C. Do not freeze.

**Application Note**

Recommended dilutions: Immunohistochemical analysis: 1:100 - 1:200. However, this need to be optimized based on the research applications.

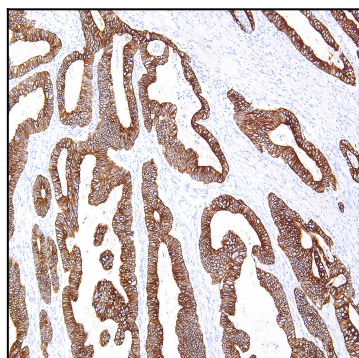


Figure 1: Immunohistochemical analysis of Cytokeratin 18 (Clone: IHC018) on Colon - 10X

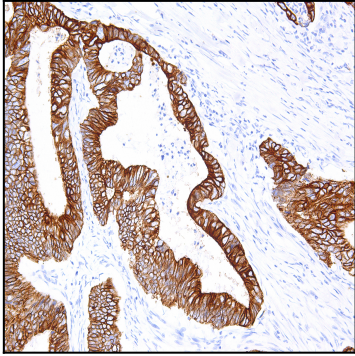


Figure 2: Immunohistochemical analysis of Cytokeratin 18 (Clone: IHC018) on Colon - 20X

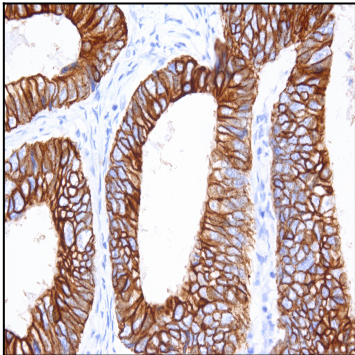


Figure 3: Immunohistochemical analysis of Cytokeratin 18 (Clone: IHC018) on Colon - 40X