

#### 44-1033: Anti-Her2/Neu Monoclonal Antibody (Clone:IHC002)(Discontinued)

<b>Clonality :</b>	Monoclonal
<b>Clone Name :</b>	IHC002
<b>Application :</b>	ELISA
<b>Reactivity :</b>	Human
<b>Gene :</b>	ERBB2
<b>Gene ID :</b>	2064
<b>Uniprot ID :</b>	P04626
<b>Format :</b>	Purified
<b>Alternative Name :</b>	ERBB2,HER2,MLN19,NEU,NGL
<b>Isotype :</b>	Mouse IgG2a
<b>Immunogen Information :</b>	Recombinant Human Her2/Neu

#### Description

The Her2/Neu (c-erbB-2) proto-oncogene is a transmembrane receptor tyrosine kinase that is clinically indicated in a number of carcinomas. Overexpression of the c-erbB-2 protein has been associated with ductal breast cancer, as well as pulmonary and gastric adenocarcinomas. A correlation between Her2 and p53 has also been documented, as overexpression of both proteins has been associated with early invasion and metastasis in bladder cancer.

#### Product Info

<b>Amount :</b>	0.1 ml / 0.5 ml
<b>Purification :</b>	Protein A/G Chromatography
<b>Content :</b>	Tris Buffer, pH 7.3 - 7.7, with 1% BSA and <0.1% Sodium Azide
<b>Storage condition :</b>	Store at 2°C - 8°C. Do not freeze.

#### Application Note

Recommended dilutions: Immunohistochemical analysis: 1:100 - 1:200. However, this need to be optimized based on the research applications.

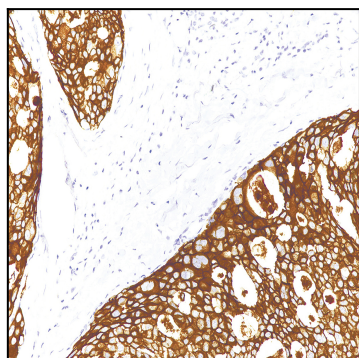


Figure 1: Immunohistochemical analysis of Her2/Neu (Clone: IHC002) on Breast