

## 44-1043: Anti-MLH1 Monoclonal Antibody (Clone:IHC409)-Ready to Use

<b>Clonality :</b>	Monoclonal
<b>Clone Name :</b>	IHC409
<b>Application :</b>	IHC
<b>Reactivity :</b>	Human
<b>Gene :</b>	MLH1
<b>Gene ID :</b>	4292
<b>Uniprot ID :</b>	P40692
<b>Alternative Name :</b>	MLH1,COCA2
<b>Isotype :</b>	Mouse IgG2a
<b>Immunogen Information :</b>	Recombinant Human MLH1

### Description

"MutL Homolog 1 (MLH1) is a protein involved in the mismatch-repair pathway. This protein is commonly associated with hereditary non-polyposis colorectal cancer, as the MLH1 gene is frequently mutated in patients with this cancer. Studies have shown MLH1 to be deficient in a high percentage of patients with microsatellite instability, as well as endometrial and ovarian cancers. Use of Anti-MLH1 is optimized when paired in an IHC panel with MSH6, MSH2, and PMS2. Anti-MLH1 is useful in the detection of MLH1 in a number of normal and neoplastic tissues, and for identifying a loss of MLH1 in tumors that are microsatellite-unstable."

### Product Info

<b>Amount :</b>	7 ml
<b>Purification :</b>	Protein A/G Chromatography
<b>Content :</b>	Tris Buffer, pH 7.3 - 7.7, with 1% BSA and <0.1% Sodium Azide
<b>Storage condition :</b>	Store at 2°C - 8°C. Do not freeze.

### Application Note

This product is available in ready to use format, hence no dilution is required.

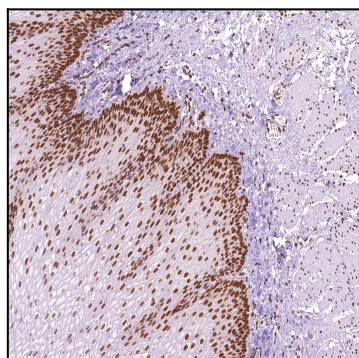


Figure 1: Immunohistochemical analysis of MLH1 (Clone: IHC409) on Esophagus