

#### 44-1052: Anti-MUC6 Monoclonal Antibody (Clone:IHC626)(Discontinued)

<b>Clonality :</b>	Monoclonal
<b>Clone Name :</b>	IHC626
<b>Application :</b>	IHC
<b>Reactivity :</b>	Human
<b>Gene :</b>	MUC6
<b>Gene ID :</b>	4588
<b>Uniprot ID :</b>	Q6W4X9
<b>Format :</b>	Purified
<b>Alternative Name :</b>	MUC6
<b>Isotype :</b>	Mouse IgG2a
<b>Immunogen Information :</b>	Recombinant Human MUC6

#### Description

Mucin 6 (MUC6) is a glycoprotein expressed in mucous neck cells, pyloric glands of the antrum, epigastric and bronchial epithelium, and in Muller ducts of the endocervix and urethral epithelium. Anti-MUC6 is useful for differentiating fetal, precancerous, and cancerous colonic mucosa from normal colon, as the antibody does not stain the latter. Anti-MUC6 stains the gastric epithelial surface of normal human gastrointestinal tract.

#### Product Info

<b>Amount :</b>	0.1 ml / 0.5 ml
<b>Purification :</b>	Protein A/G Chromatography
<b>Content :</b>	Tris Buffer, pH 7.3 - 7.7, with 1% BSA and <0.1% Sodium Azide
<b>Storage condition :</b>	Store at 2°C - 8°C. Do not freeze.

#### Application Note

Recommended dilutions: Immunohistochemical analysis: 1:100 - 1:200. However, this need to be optimized based on the research applications.

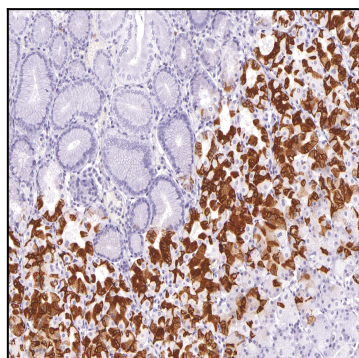


Figure 1: Immunohistochemical analysis of MUC6 (Clone: IHC626) on Stomach