

**44-1063: Anti-p504s Monoclonal Antibody (Clone:IHC504)-Ready to Use(Discontinued)**

|                                |                         |
|--------------------------------|-------------------------|
| <b>Clonality :</b>             | Monoclonal              |
| <b>Clone Name :</b>            | IHC504                  |
| <b>Application :</b>           | IHC                     |
| <b>Reactivity :</b>            | Human                   |
| <b>Gene :</b>                  | AMACR                   |
| <b>Gene ID :</b>               | 23600                   |
| <b>Uniprot ID :</b>            | Q9UHK6                  |
| <b>Alternative Name :</b>      | AMACR                   |
| <b>Isotype :</b>               | Mouse IgG1              |
| <b>Immunogen Information :</b> | Recombinant Human p504s |

**Description**

"p504s, also known as Alpha-methylacyl coenzyme A racemase (AMACR), is an enzyme localized in the peroxisome and mitochondria, which functions in Beta-oxidation of branched chain fatty acids, as well as bile synthesis. AMACR has been clinically indicated as a tissue biomarker for prostate cancer and colorectal cancer, as well as high-grade prostatic intraepithelial neoplasia, a precursor lesion of prostate cancer. p504s overexpression has also been detected in a number of other cancers including ovarian, breast, bladder, lung, and renal cell carcinomas, lymphoma, and melanoma."

**Product Info**

|                            |   |
|----------------------------|---|
| <b>Amount :</b>            | 7 ml  |
| <b>Purification :</b>      | Protein A/G Chromatography                                    |
| <b>Content :</b>           | Tris Buffer, pH 7.3 - 7.7, with 1% BSA and <0.1% Sodium Azide |
| <b>Storage condition :</b> | Store at 2°C - 8°C. Do not freeze.                            |

**Application Note**

This product is available in ready to use format, hence no dilution is required.

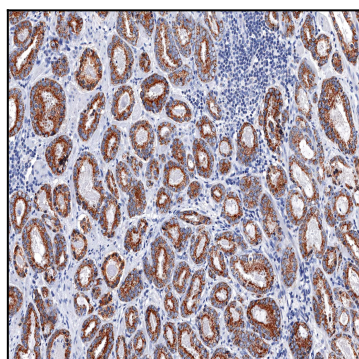


Figure 1: Immunohistochemical analysis of p504s (Clone: IHC504) on Prostate Cancer