

44-1071: Anti-PMS2 Monoclonal Antibody (Clone:IHC412)(Discontinued)

| | |
|--------------------------------|------------------------|
| Clonality : | Monoclonal |
| Clone Name : | IHC412 |
| Application : | IHC |
| Reactivity : | Human |
| Gene : | PMS2 |
| Gene ID : | 5395 |
| Uniprot ID : | P54278 |
| Format : | Purified |
| Alternative Name : | PMS2,PMSL2 |
| Isotype : | Mouse IgG1 |
| Immunogen Information : | Recombinant Human PMS2 |

Description

Postmeiotic Segregation Increased 2 (PMS2) is a DNA repair protein involved in mismatch repair. Mutations and deficiencies in the PMS2 gene have been linked to microsatellite instability, and malignancies such as hereditary nonpolyposis colorectal cancer and endometrial cancer. Anti-PMS2 is recommended to be used as part of a panel along with antibodies against MLH1, MSH2, and MSH6.

Product Info

| | |
|----------------------------|---|
| Amount : | 0.1 ml / 0.5 ml |
| Purification : | Protein A/G Chromatography |
| Content : | Tris Buffer, pH 7.3 - 7.7, with 1% BSA and <0.1% Sodium Azide |
| Storage condition : | Store at 2°C - 8°C. Do not freeze. |

Application Note

Recommended dilutions: Immunohistochemical analysis: 1:100 - 1:200. However, this need to be optimized based on the research applications.

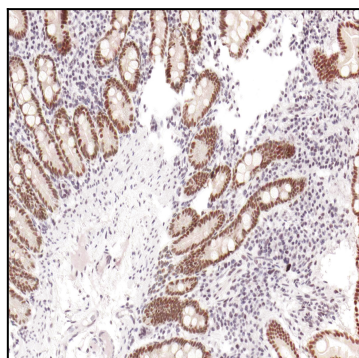


Figure 1: Immunohistochemical analysis of PMS2 (Clone: IHC412) on Duodenum