

## 44-1077: Anti-PSAP Monoclonal Antibody (Clone:IHC655)-Ready to Use

<b>Clonality :</b>	Monoclonal
<b>Clone Name :</b>	IHC655
<b>Application :</b>	IHC
<b>Reactivity :</b>	Human
<b>Gene :</b>	PSAP
<b>Gene ID :</b>	5660
<b>Uniprot ID :</b>	P07602
<b>Alternative Name :</b>	PSAP, GLBA, SAP1
<b>Immunogen Information :</b>	Recombinant Human PSAP

### Description

"Prostatic Specific Acid Phosphatase (PSAP) is a prostatic enzyme found in the glandular epithelium of the prostate. PSAP levels are elevated in hyperplastic prostate and prostate carcinoma, with the highest levels being detected in metastasized prostate cancer. Moderate overexpression of PSAP is also characteristic of diseases of the bone (such as Paget's disease or hyperparathyroidism), diseases of blood cells (such as sickle-cell disease), multiple myeloma, or lysosomal storage diseases (such as Gaucher's disease). PSAP is considered more sensitive, yet less specific, than PSA, however Anti-PSAP can act as a useful complement to Anti-PSA under suitable clinical contexts."

### Product Info

<b>Amount :</b>	7 ml
<b>Purification :</b>	Protein A/G Chromatography
<b>Content :</b>	Tris Buffer, pH 7.3 - 7.7, with 1% BSA and <0.1% Sodium Azide
<b>Storage condition :</b>	Store at 2°C - 8°C. Do not freeze.

### Application Note

This product is available in ready to use format, hence no dilution is required.

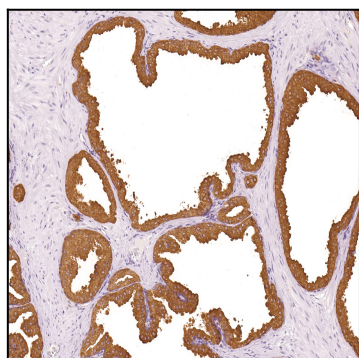


Figure 1: Immunohistochemical analysis of PSAP (Clone: IHC655) on Prostate